

**WATER RATES AND POLICIES  
IN MISSOURI MUNICIPALITIES**

**January 2007  
Price: \$25.00  
(Single copies available to  
member cities at no charge)**

**Published by  
Missouri Municipal League  
1727 Southridge Drive  
Jefferson City, Missouri 65109**

## FOREWORD

Providing and financing an adequate water supply is of continuing concern for municipal officials in Missouri. Since sources of supply, treatment and distribution systems, water use requirements and operational policies vary widely to meet local conditions, a survey of this type does not provide specific conclusion regarding necessary or desired policy or equitable rates. This study, however, makes available information on existing policies and rates and provides local information regarding source of supply and treatment that may be helpful in observing how other cities and villages have handled these matters.

This technical bulletin is a revision of the 2000 League study of water rates and policies in effect in Missouri municipalities. Information in this bulletin was obtained from a questionnaire sent by League staff to all member cities.

Our research staff has taken the liberty of interpreting some of the information submitted in or with the questionnaire. While the information is as accurate as possible, we admit to the possibility of inaccuracies within this publication. Also, because of the time period between collection, tabulation and distribution, some cities may have altered their water system policies.

We sincerely appreciate the cooperation of municipal officials in contributing information for this publication and welcome any suggestion or corrections.

## TABLE OF CONTENTS

### PART I

General Information .....	3
Operate Water Utility .....	4
Source of Water Supply .....	4
Water Treatment .....	5
Water Conservation .....	6
Financing of Distribution Mains .....	7
Financing of Service Lines and Meters .....	8
Maintenance of Service Lines .....	9
Deposits .....	9
Landlord Accountability .....	10
Late Fees and Penalties .....	10
Rates .....	11
Outstanding Bond Issues .....	12
Rate Increases .....	13
Finances and Operations .....	13
Water Service Outside City Limits .....	13

### PART II

Table I. Municipalities That Do Not Operate A Water Utility.....	14
Table II. Source of Water Supply .....	15
Table III. Treatment .....	19
Table IV. Tap/Connection Fees .....	23
Table V. Deposit Amounts and Policies.....	27
Table VI. Late Payment Penalties and Policies .....	31
Table VII. User Fee Schedule .....	35
Table VIII. Finances .....	44
Table IX. Extension Policies .....	49
Table X. Service Outside Corporate Limits .....	53
Table XI. Water Testing and Conservation .....	57

# MUNICIPAL WATER UTILITIES

## WATER POLICY AND RATE SURVEY

### General Information

The Missouri Municipal League published its first *Water Rates and Policies in Missouri Municipalities* technical bulletin in 1967. In order to reflect the continually changing policies in Missouri municipalities, we have periodically updated this report; this study represents the ninth revision.

This bulletin represents responses from 334 municipalities, of whom 104 reported that they do not own or operate a water utility, leaving 230 responses from municipalities that do operate their water company.

Not only must a municipality provide an adequate, potable water supply, it also must charge the customer in a manner that will pay the cost of water distribution. This charge is commonly referred to as the water rate or schedule of charges. Since each municipality develops a rate schedule tailored to its own needs and operating costs, rate schedules will vary from one municipality to another. Thus, this updated bulletin is intended to inform municipal officials of the current water rates and policies in effect in other municipalities and to permit meaningful comparisons. With this understanding, the present study focuses upon the following topics:

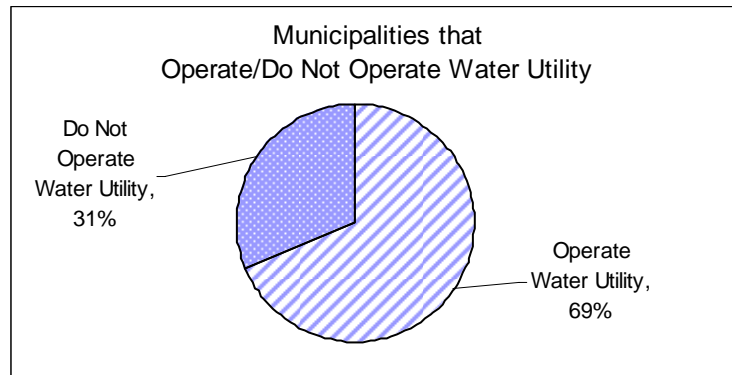
1. the sources and treatment of water supply;
2. who pays for the water main, service connections, and maintenance of facilities;
3. service connection charges and meter deposits;
4. water costs to residential customers inside and outside the city;
5. policies concerning penalties and reconnection fees after shut-off for nonpayment; and
6. the finances and operations of the water systems.

The policies carried out in each of these areas may affect some or all of the remainder. For example, if there is an abundance of subsurface water, the rates generally will be lower than in other areas. Similarly, if a municipality is required by local conditions to provide complete treatment and softening of its water, the cost of production generally will be higher and usually will be reflected by higher rates.

In order to facilitate comparisons, some tables and summaries have been grouped into three population categories: over 10,000, 2,500 to 10,000, and under 2,500.

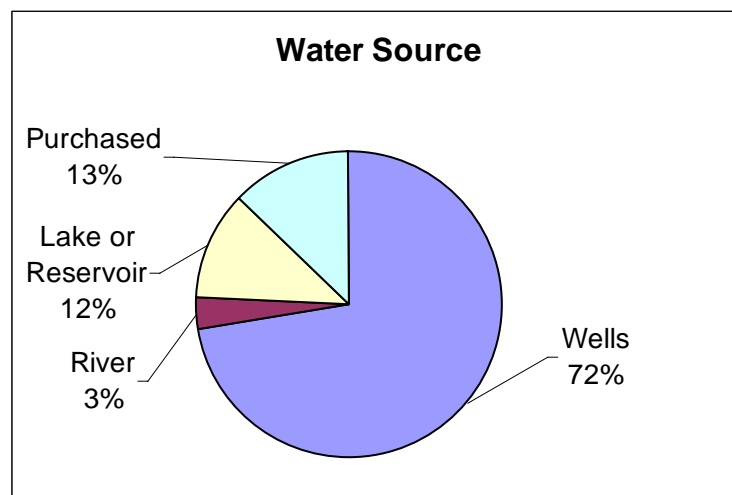
## Own or Operate Water Utility

One hundred and four municipalities indicated that they do not operate their own water utility company. While 230 municipalities did indicate that they do operate their own water utility.



## Source of Water Supply

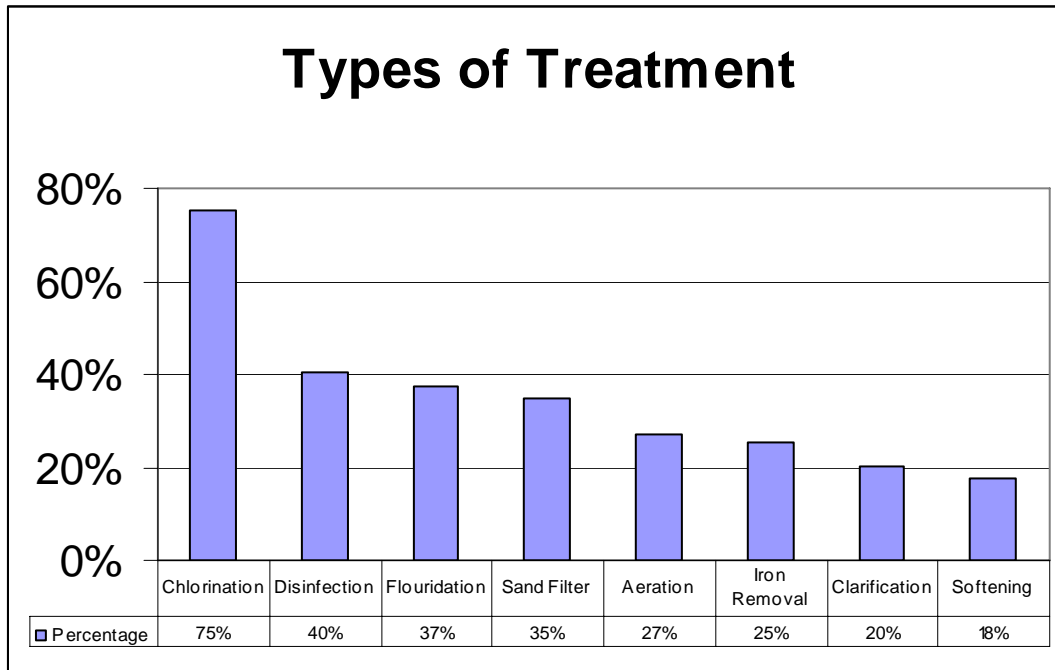
The state of Missouri is quite fortunate in having an excellent water supply in much of the state. Principally this is caused by the enormous quantity of subsurface porous stone, (i.e limestone), which provides “aquifers” or “pipes” for underground water flow. Hence 72% of the municipal water supply comes from wells. Twelve percent of the total supply stems from lakes or reservoirs and 3% from rivers or streams. The remaining 13% is purchased from area water districts or neighboring cities. These findings are practically identical to the results of the 2000 survey.



## Water Treatment

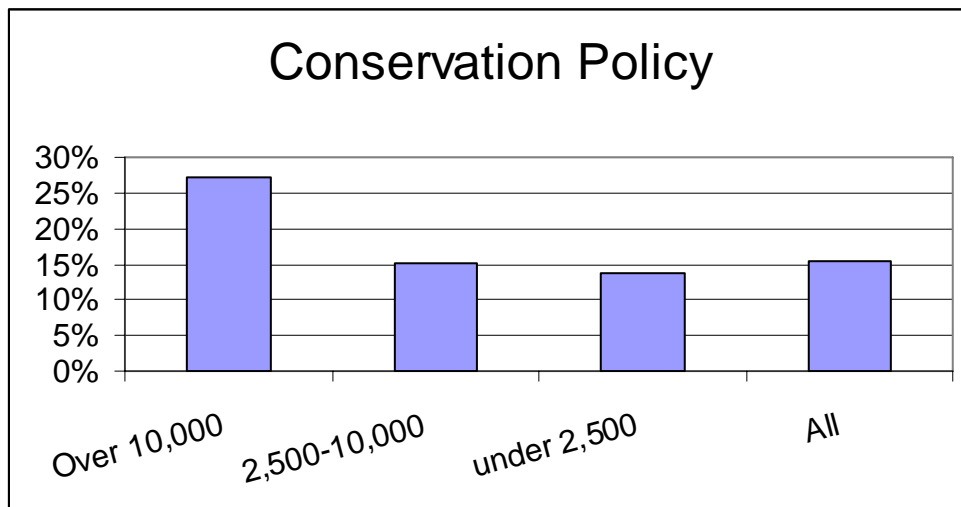
Results from this survey indicate that 18% of municipal water utilities do not perform any type of water treatment. These results show a slight increase in treatment from the 2000 survey findings of 22% performing no water treatment. This slight increase may be due to increased state and federal regulation. While 18 percent may seem like a large number of utilities not performing treatment, it should be kept in mind that ground water makes up the vast majority of the municipal water supply and it is not uncommon for wells to provide clean, uncontaminated water requiring no treatment.

Various types of water treatment are performed; the most common being chlorination and other types of disinfection. Fluoridation was also quite common with 37% of cities adding fluoride to the water. Sand filters were employed by about one-third of cities. Other treatment types were also utilized as illustrated below.



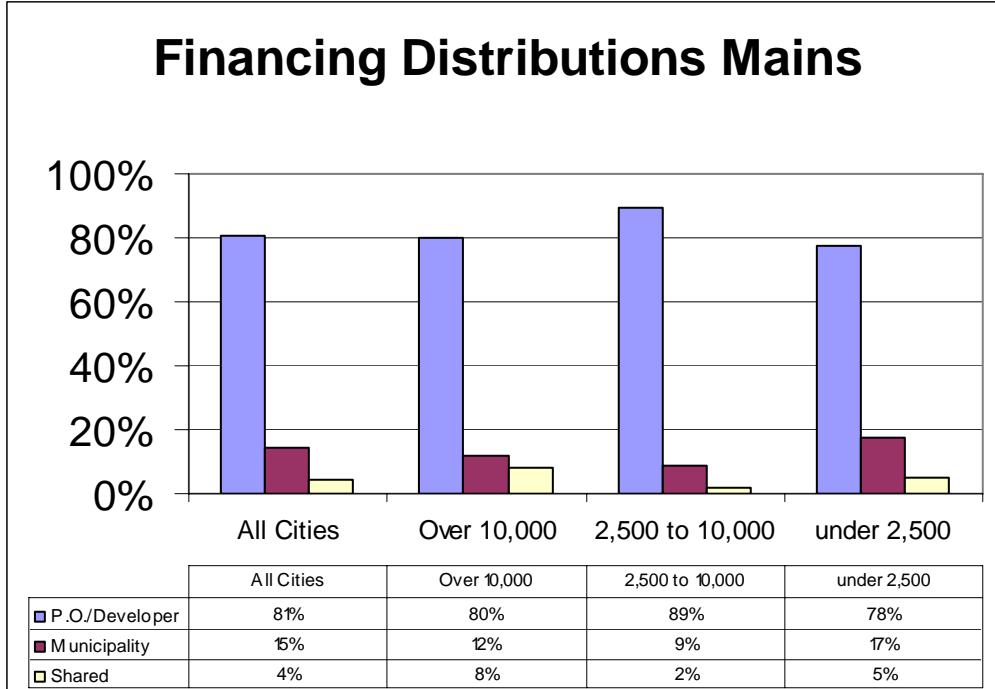
## Water Conservation Policy

Sixteen percent of municipalities surveyed have a water conservation policy in place. Larger cities were more likely to have a conservation policy with 27% of cities over 10,000 having such a policy. In the 2,500 to 10,000 category the percentage fell to 15%, while in the under 2,500 group the percentage dropped to 14%. Many cities sent in their conservation policies along with the survey, copies of these policies may be requested by contacting League Headquarters.



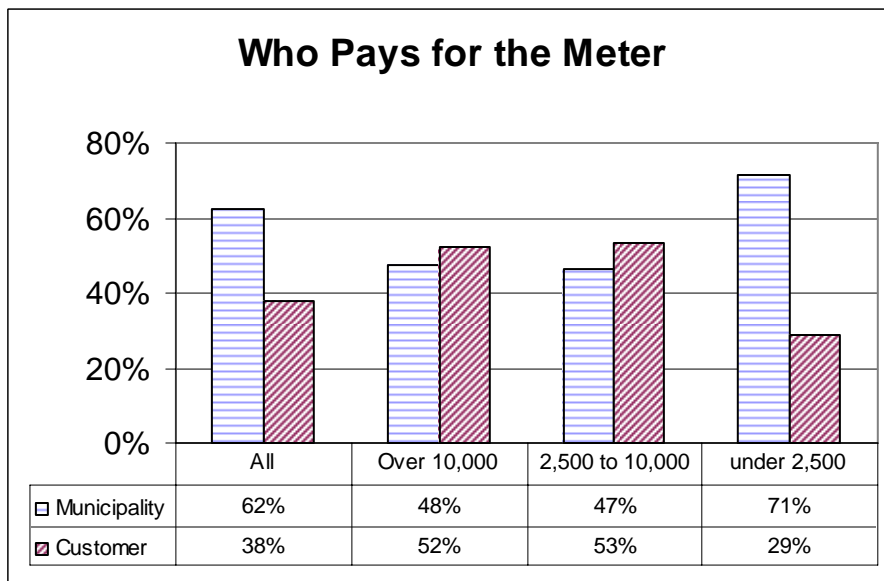
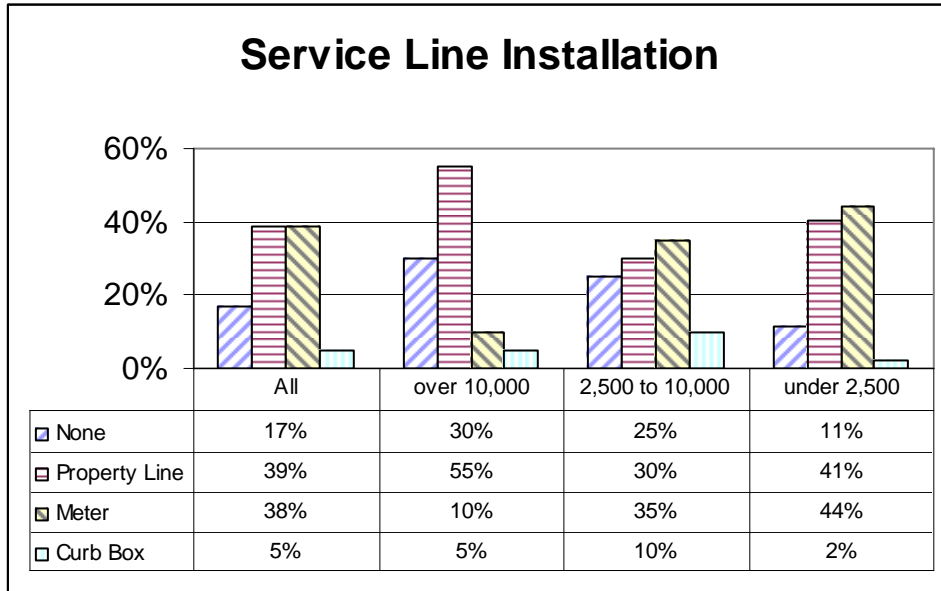
## Financing of Distribution Mains

Fifteen percent of municipalities responding to this question pay for the cost of new distribution mains. This is down from the 23% calculated in the 2000 survey. The biggest drop occurred in the under 2,500 category, going from 45% of municipalities bearing the cost down to 17% in this survey. Tabulated below are the percentages of who bears the costs categorized by population.



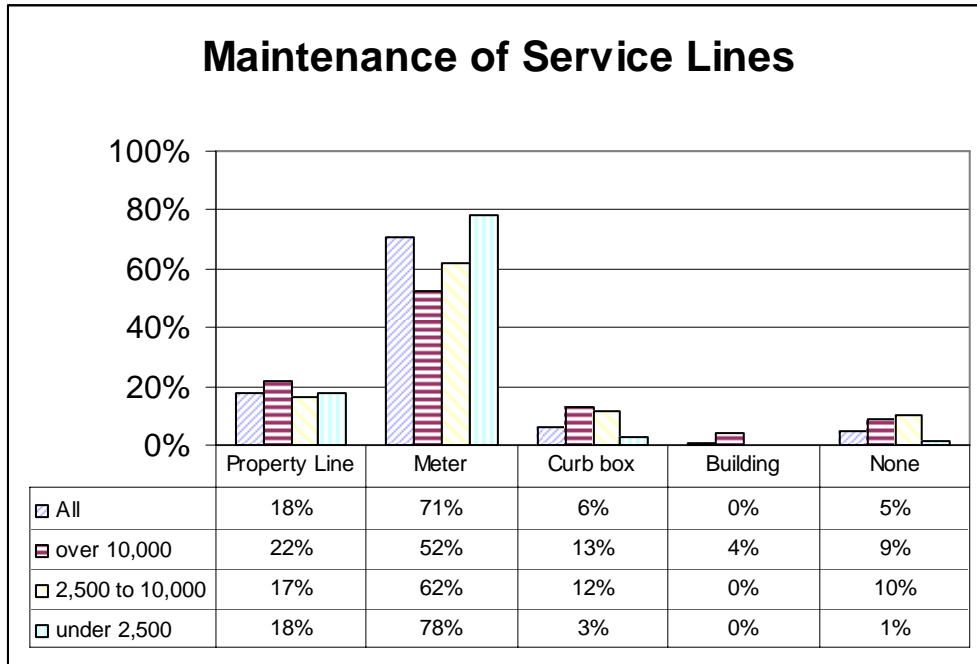
## Financing of Service Lines and Meters

Eighty-three percent of cities answering this question indicated the city built a portion of the service lines. Thirty-nine percent built out to the property line, while 44% built out either to the meter (38%), to curb box/stop box (5%), or to the street (1%). The graph below shows how the service line installations breakdown for the bigger and smaller cities. Generally, the larger the city, the less likely it is to extend the service lines out further. For instance, only 10% of the over 10,000 population cities build out to the meter, while 44% of the under 2,500 cities did. The same general trend appears when looking at who pays for the meter, with larger cities being more likely to require the customer to purchase the new meter.



## Maintenance of Service Lines

Based on the survey results it appears that many Missouri municipalities provide maintenance further out on the service line than they build. For instance, 43% of all cities build out to the meter or curb box, while 76% of all cities provide maintenance that far. In addition, smaller cities tend to provide the maintenance further out than the larger cities. For example, 78% of smaller cities provide maintenance to the meter, while only 52% of the larger cities did.

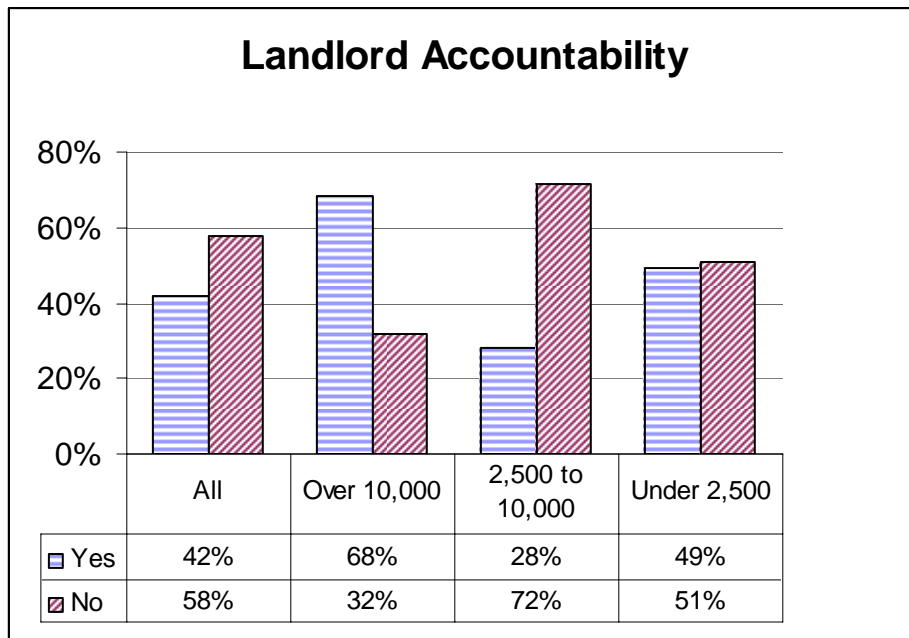


## Deposits

Most municipalities responding to this portion of the survey indicated that a meter deposit was required to insure payment of accounts. See Table V for a listing of the deposits charged by particular cities. Twenty-nine percent of cities reported charging renters a higher deposit than homeowners. Table V also lists the deposit amounts charged to renters. Additionally, 12% of respondents reported that homeowner's deposits were refunded after a set time period but not renters.

## Landlord Accountability

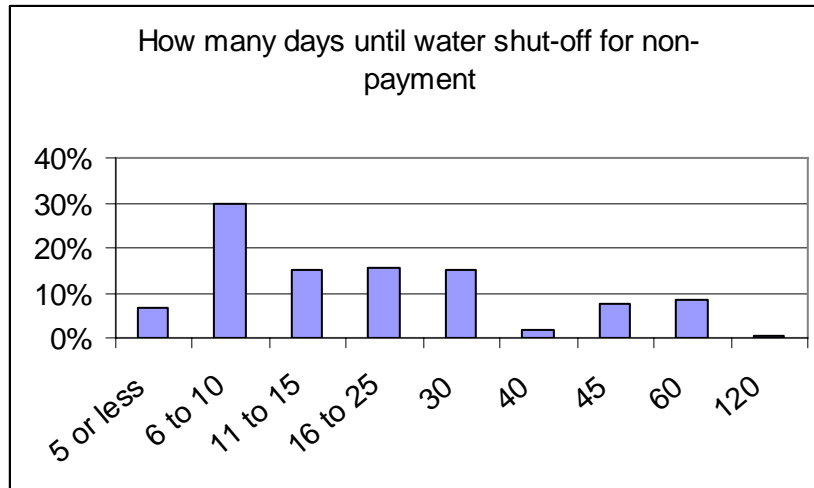
Section 250.140 Missouri Revised Statutes (RSMo) allows municipalities to hold landlords accountable for the delinquent utility accounts of their renters. Overall 42% of cities answering this question have enacted a policy exercising this power. Interestingly the breakdown for population groups showed mixed results. Large cities were much more likely to utilize 250.140 RSMo, medium cities were just the opposite, and the smaller cities were evenly split.



## Late Fees and Penalties

Over 95% of the municipalities answering this section indicated they assessed some form of penalty for late payments. More than 80% indicated the penalty was based on a percentage of the delinquent bill while about 17% charged a flat fee. Forty-five percent of those assessing a flat fee charged \$10, while about 25% charged \$5. Various other amounts were charged in much lower percentages. Of the cities assessing a percentage fee, 10% was the most common, making up almost 75%. Five percent was the second most common amount, with 15%. Various other percentages made up the remainder.

Municipal policy varies greatly on the amount of time elapsed before shutting off water service following non payment of the water bill. As many as 7% shut the water off within 5 days for nonpayment, while over 15% waited 45 days or longer. The graph on the next page illustrates these results.



Following disconnection for nonpayment, almost all cities reported charging a reconnect fee to cover the labor costs of the action. Fees ranged from \$5 to \$100 with about 40% charging \$25, 13% charging \$50, 12% charging \$20 and a variety of other amounts making up the remainder. Approximately 7% of those surveyed indicated that the fee increases upon second and third disconnects. About 55% reported that reconnections were available during off hours. Of those cities, 60% reported charging an additional fee for the reconnect during off hours. Additional fees for reconnection during these non-business hours ranged from \$10 to \$100, with \$25 being the most common.

### Rates

In order to fund the municipal water utility all municipalities charge some form of fee for the usage of the system. Ninety-four percent of those surveyed indicated their rate charges were based on gallons, while 6% use the cubic feet measure. Two cities reported not having any meters and just charging a flat rate (one charged \$15 per month for water service, the other \$110 per year). Almost all cities reported charging a minimum fee ranging from \$2 to \$35 per month. Of those, 80% reported providing at least some amount of water with that minimum fee. This amount ranged anywhere from 99 gallons to 10,000 gallons. One thousand gallons was the typical amount, making up about 60 percent. Approximately 25% of cities provided 2,000 gallons with the minimum charge, while about 5% provided 1,500 gallons, and another 5% provided up to 3,000 gallons. Various other amounts made up the remaining 5%.

Some cities also vary their minimum fee based upon the size of the meter installed. Others varied the minimum fee based on commercial vs. residential usage. Fees also varied for non-residents and this is discussed on page 13.

In addition to imposing the minimum charge, most cities impose an additional fee based on usage. For a few cities this additional fee is a set amount per quantity. For example, one city reported charging a minimum fee of \$8 and this includes the first 2,000 gallons, for water used in excess of 2,000 gallons \$3.25 per 1,000 gallons is added to the monthly bill. The majority of cities use a more complicated system known as a “block” or “bracket” system. Under this system, the rates charged for each quantity of water vary based upon which step in the block system the customer has reached. For example, another city reported charging \$5 for the first 1,500 gallons plus \$.18 per 100 gallons for the next 18,500 gallons, + \$.16 per 100 gallons for the next 18,500 gallons, + \$.16 per 100 on the next 30,000 gallons and \$.11 per 100 gallons thereafter. In the vast majority of municipalities the rate decreased with greater usage. This practice stems from the principle of economies of scale. Overhead, capital costs and operation costs normally decrease at greater volumes, and these savings can be passed on to the customer. However, the rates should not decrease to a point below the actual cost to the municipalities of producing, treating, and distributing the water.

No uniformity among municipalities as to either the number of brackets or the size of the brackets was found. Most often the charges were based on per 1,000 gallon usage, but some cities used 100 gallons and others per gallon. Additionally, six percent of those surveyed used the cubic foot measure instead of gallons. One city even has different rates for summer time usage.

Table VII provides a listing of the minimum charges, the amount of water provided with that fee and a complete listing of the fee schedule as reported.

### Outstanding Bond Issues

Most municipalities finance water system projects through the passage of general obligation and revenue bonds. Fifty-seven percent of those municipalities responding to the survey reported having outstanding bonds: 61% using revenue bonds, 30% using general obligation, and 9% using a combination or some other type of bond mechanism. For a complete listing of survey data on bond issues, see Table VIII.

## Rate Increases

Most municipalities have increased their water rates in recent years. Sixty-three percent indicated they had a water rate analysis done as part of the process. Eighty-five percent indicated they had increased the rates within the last 10 years. Seventy-five percent had done so within the last five years and 60% had increased the rates within the last three years. Additionally 47% contemplated a rate increase this next year. Of those contemplating a rate increase next year, the percentage of the increase ranged from 1% to 50% with 10% being the most common increase amount. See Table VIII for a complete listing of the survey results on this issue.

## Finances and Operations

Eighty-seven percent of municipal water utilities indicated that the utility's finances were self sufficient. It is not uncommon for municipal utilities to share in supporting the costs of the municipal operations. Thirty percent of those answering this question indicated that they transferred funds to the city's general revenue. The basis for these transfers was usually to help offset the administrative costs of the utility (i.e. space at city hall and personnel time). Some municipalities also made PILOT (payments in lieu of taxes) transfers, usually based on a set percentage such as 5% of gross revenue.

## Water Service Outside City Limits

Seventy-four percent of those answering this portion indicated that the municipality provided water service outside of the city limits. Only 15% of municipalities indicated that the city paid any portion of the costs for the extensions of the water mains outside of the corporate limits. Even though few cities paid for the costs of the extensions, 85% of municipalities maintained control over the water system outside of the city. Approximately one-third of the cities indicated that the rates charged for water usage outside of the city was the same as that charged to residents. Eighty-seven percent indicated that the rates charged were enough to cover the costs of the service outside the city limits. And about one-third of municipalities with water utilities indicated they sold water to other water utilities.

### Table I. Municipalities That Do Not Operate Water Utility

The following municipalities indicated that they do not own or operate a water utility.

Agency	Flint Hill	Noel
Airport Drive	Florissant	Norwood Court
Avondale	Foley	Oakland
Baring	Forest City	Oakview
Battlefield	Fremont Hills	Oakwood
Bel-Nor	Gibbs	Old Monroe
Bella Villa	Glendale	Overland
Bellefontaine Neighbors	Gower	Pagedale
Bethel	Green Park	Phillipsburg
Beverly Hills	Hartsburg	Pleasant Valley
Blackburn	Holt	Queen City
Blackwater	Holts Summit	Revere
Breckinridge Hills	Houston Lake	River Bend
Brentwood	Huntleigh	Riverside
Bridgeton	Indian Point	Riverview
Byrnes Mill	Iron Mountain	Shrewsbury
Clarkson Valley	Jennings	St. Ann
Clayton	Joplin	St. George
Cleveland	Kimberling City	St. John
Clifton Hill	Kimmswick	St. Martin
Cool Valley	Laclede	St. Paul
Country Club	Ladue	Stoutland
Country Club Hills	Lake Lotawana	Sunset Hills
Crestwood	Lamar Heights	Sycamore Hills
Crystal Lakes	Lexington	Town and Country
Dardenne Prairie	Lohman	Valley Park
Dellwood	Loma Linda	Velda City
Duquesne	Manchester	Velda Village Hills
Edmondson	Marionville	Vinita Park
Ellisville	Marlborough	Warrensburg
Eolia	Mexico	Warson Woods
Fair Grove	Milo	Webster Groves
Farley	Mosby	Winchester
Fenton	New Melle	Woodson Terrace
Ferrelview	Newtonia	Wooldridge

**Table II. Source of Water Supply**

**Municipalities with population over 10,000**

Municipality	Population	Customers	Wells	River	Lake	Purchased from	Other Source
Cape Girardeau	36472	16543	50%	50%			
Carthage	13000	5300	100%				
Eureka	10400	3200	100%				
Excelsior Springs	10800	4000	100%				
Farmington	13924	5106	100%				
Festus	12000	4500		100%			
Gladstone	26365	9600	100%				
Harrisonville	10000	3982			100%		
Kirksville	17304	7421			100%		
Kirkwood	27324	10300	76%	10%		Mo American (14%)	
Lake Ozark	14089	650					
Lebanon	12155	5908	100%				
Lee's Summit	85000	32152				Independence (65%)	Kansas City (35%)
Marshall	13400	5200	100%				
Maryville	10600	3900			100%		
Nixa	16466	7000	100%				
Poplar Bluff	16651	7832		100%			
Sedalia	20000	10000	30%		70%		
Springfield	160000	79363	6%	22%	62%		Spring (10%)
St. Charles	64321	22962	40%			St. Louis (60%)	
Webb City	10500	4141	90%			Mo Am (10%)	
Wentzville	23500	10072				water district (100%)	
West Plains	11200	5360	100%				

**Municipalities with population between 2,500 and 10,000**

Municipality	Population	Customers	Wells	River	Lake	Purchased from	Other Source
Ashland	3000	1187	100%				
Bethany	3005	1600			100%		
Bolivar	9685	5479	100%				
Bonne Terre	4000	1800	100%				
Boonville	8202	3300		100%			
Branson	6500		20%		80%		
Brookfield	4769	2110			100%		
Buffalo	2898	1401	100%				
Butler	4209	2060		40%	60%		
California	4005	2051	100%				
Camdenton	2779	1602	100%				
Cameron	9788	2857			100%		
Canton	2517	899	100%				
Caruthersville	6760	2600	100%				
Cassville	2890	1656	100%				
Centralia	4000	1675	100%				
Charleston	4732	1625	100%				
Chillicothe	8968	4022	100%				
Crystal City	4247	2140	100%				
DeSoto	6375	2441	100%				
Dexter	7600		100%				
El Dorado Springs	3775	1864	100%				
Fayette	2793	1140		100%			
Fredericktown	3950	1944			100%		
Hermann	2674	1344	100%				
Higginsville	4682	2050			100%		
Kearney	7000	2680	80%			Kansas City (20%)	
Lamar	4425	2204			100%		
Licking	2982	701	100%				
Macon	5538	2850			100%		
Malden	4782	2198	100%				
Marceline	2568	1164			100%		
Moscow Mills	2900	1040	100%				
Mountain View	4017	1873	100%				
Nevada	8601	3800	100%				
North Kansas City	4714	2200	100%				
Osage Beach	3949	2243	100%				
Owensville	2500	1380	100%				
Ozark	9665	6600	100%				

**Table II. Source of Water Supply**

**Municipalities with population between 2,500 and 10,000**

Municipality	Population	Customers	Wells	River	Lake	Purchased from	Other Source
Pacific	5500	2300	100%				
Palmyra	3467	1604	100%				
Park Hills	8252	4966	100%				
Peculiar	4730	1500			100%		
Perryville	7667	3717	47%	53%			
Pevely	3768	1400	100%				
Platte City	5200	1941				Kansas City (100%)	
Portageville	3295	1350	100%				
Richmond	6116	2600	100%				
Savannah	4762	1995	72%	25%			
Scott City	4591	2365	100%				
Smithville	9000	3000			100%		
St. Clair	4390	1600	100%				
St. James	3704	1667	100%				
Ste. Genevieve	4400	2200	100%				
Sullivan	6351	2766	100%				
Tipton	3261	1000	100%				
Versailles	2565	1000	100%				
Warrenton	5280	2900	100%				
Waynesville	3507	1397	100%				
Willard	3177	1710	100%				
Wright City	2800	1200	100%				

**Municipalities with population under 2,500**

Municipality	Population	Customers	Wells	River	Lake	Purchased from	Other Source
Adrain	1780	627		75%	25%		
Advance	1244	556	100%				
Albany	1937	876	100%				
Alton	668		100%				
Anderson	1850	850	100%				
Ash Grove	1430	721	100%				
Belle	1344		100%				
Bellflower	450	214	100%				
Bernie	1777		100%				
Big Lake	127	399				City of Craig (100%)	
Bloomsdale	460	210	100%				
Branson West	406	242	100%				
Brashear	316	134			100%	Adair County (100%)	
Braymer	950		100%				
Bucklin	526	234		5%	95%		
Bunker	420	208	100%				
Butterfield	416	163	100%				
Cainsville	400	196				Harrison County #2 (100%)	
Calhoun	491	229				Henry Co. PWSD #3 (100%)	
Callao	291	150				Macon County PWSD #1 (100%)	
Campbell	1883		100%				
Clarksville	491	314	100%				
Clarkton	1330	525	100%				
Clever	1500	610	100%				
Cole Camp	1038	582	100%				
Collins	176	100	100%				
Concordia	2360	971			100%		
Corder	427	220		50%	50%		
Craig	309	132	100%				
Crane	1460	640	100%				
Diamond	807	480	100%				
Diggins	298		100%				
Dixon	1570	750	100%				
Downing	396	206				SCRWR#1 (100%)	
East Lynne	400	166				Tri-County (100%)	
Ellington	1045	420	100%				
Ellisnore	363	238	100%				
Emerald Beach	250	242	100%				
Everton	322	180	100%				
Fairview	395	171	100%				

**Table II. Source of Water Supply**

**Municipalities with population under 2,500**

Municipality	Population	Customers	Wells	River	Lake	Purchased from	Other Source
Farber	418	175			100%		
Fordland	864	347	100%				
Freeburg	521	263	100%				
Gallatin	1860	900	100%				
Gideon	1113	420	100%				
Glasgow	1268	549	100%				
Granby	2121	931	100%				
Green City	688	356				Rural Water (100%)	
Hamilton	1813	850			100%		
Hartville	607	400	100%				
Hawk Point	459	314	100%				
Hermitage	496	255	100%				
Holcom	696	350	100%				
Houston	1992	1100	100%				
Hume	350	140				(100%)	
Hunnewell	229	101				(100%)	
Iberia	605	339	100%				
Jasper	1011	436	100%				
Kahoka	2241	1142	100%				
King City	1012	475					
Kingdom City	121	98	100%				
Koshkonong	205	140	100%				
La Grange	1007	410	100%				
La Plata	1500					(100%)	
Lake Tapawingo	843	380				Independence (100%)	
Lake Waukomis	917	437				Missouri American Water company (100%)	
Lake Winnebago	902	460				Tri County (100%)	
Lanagan	400	207	100%				
Laredo	275	100				Linn-Livingston Water District (100%)	
Lathrop	2092	1200				K.C. Water (100%)	
Laurie	663	325	100%				
Liberal	779	372	100%				
Lincoln	1026	500	100%				
Linn	1400	635	100%				
Lockwood	989	523	100%				
Louisburg	147	65	100%				
Maitland	329	180	100%				
Mansfield	1349	628	100%				
Marble Hill	1500	700	100%				
Marthasville	837	410	100%				
Memphis	2061	1017			100%		
Merriam Woods	1142	650	100%				
Meta	249	135	100%				
Milan	1958	858				Locust Creek (100%)	
Miner	1056	435	100%				
Morley	792	310	100%				
Mound City	1193	625	100%				
Mountain View	2430	1177	100%				
Neelyville	407	250	100%				
New Bloomfield	599	270	100%				
New Florence	654	332	100%				
New Franklin	1145		100%				
New Hampton	349	140				Gentry Water (100%)	
New Haven	1938	940	100%				
Newburg	423	220	100%				
Newtown	209	95				Milan (100%)	
Norborne	805	400	100%				
Northmoor	399	147				K.C. (100%)	
Norwood	552	298	100%				
Oak Grove Village	382						
Oran	1248	600	100%				
Orrick	889		100%			Ray County #2 (100%)	
Osceola	835	435	100%				
Otterville	500	240	100%				
Pierce City	1385	100					

**Table II. Source of Water Supply**

**Municipalities with population under 2,500**

<u>Municipality</u>	<u>Population</u>	<u>Customers</u>	<u>Wells</u>	<u>River</u>	<u>Lake</u>	<u>Purchased from</u>	<u>Other Source</u>
Plattsburg	2400				100%		
Pleasant Hope	600	281	100%				
Polo	582	279	100%				
Princeton	1046	525	100%				
Raymondville	442	181	100%				
Rich Hill	1461	743			100%		
Ridgeway	500	223				PWSD No 2 (100%)	
Rock Port	1395	631	100%				
Rogersville	1508	856	100%				
Salisbury	1726	900	100%				
Seligman	877	884	100%				
Sheldon	529		100%				
Silex	206	118	100%				
Skidmore	404	160	100%				
Slater	2083	100	100%				
Smithton	510	239	100%				
South Greenfield	139	72	100%				
Southwest City	840	344	100%				
St. Mary	377	193	100%				
Steelville	1429	661	100%				
Stewartsville	759					PWSD #1 Clarksdale (100%)	
Stockton	1960	892	100%				
Stover	968	500	100%				
Sweet Springs	1628					Water District (100%)	
Thayer	2201	1066	100%				
Truesdale	397	242	100%				
Unionville	2040	1087			100%		
Unity Village	150	75			100%		
Urbana	407	245	100%				
Urich	499	245				Water District (100%)	
Vienna	618	350	100%				
Wayland	425	203	100%				
Weableau	518	240	100%				
Weston	1631	750	100%				
Wheaton	700	296	100%				
Willow Springs	2147	1102	100%				
Winona	1290	648	100%				
Wood Heights	785					Ray (100%)	
Wyaconda	310	157			100%		
Wyatt	364	248	100%				

**Table III. Treatment**

**Municipalities with population over 10,000**

Municipality	Population	Clarification		Iron Removal		Chlorination		Aeration		Sand Filter	
		Softening		Disinfection		Fluoridation		Membrane		Osmosis	
Springfield	160000			X		X		X			X
Lee's Summit	85000	X	X			X		X			X
St. Charles	64321	X	X	X		X		X			X
Cape Girardeau	36472	X	X	X		X		X			X
Kirkwood	27324	X	X			X		X			X
Gladstone	26365		X	X		X		X			X
Wentzville	23500	X	X	X		X		X			
Sedalia	20000	X				X					X
Kirksville	17304	X				X		X			
Poplar Bluff	16651	X				X		X			
Nixa	16466							X			
Lake Ozark	14089										
Farmington	13924							X			
Marshall	13400			X		X		X			
Carthage	13000		X			X		X			X
Lebanon	12155					X		X			
Festus	12000	X	X	X		X		X			X
West Plains	11200					X		X			X
Excelsior Springs	10800		X	X		X		X			
Maryville	10600	X				X		X	X		
Webb City	10500					X		X			
Eureka	10400					X		X			
Harrisonville	10000	X				X		X			X

**Municipalities with population between 2,500 and 10,000**

Municipality	Population	Clarification		Iron Removal		Chlorination		Aeration		Sand Filter	
		Softening		Disinfection		Fluoridation		Membrane		Osmosis	
Ashland	3000					X		X			
Bethany	3005	X				X		X			X
Bolivar	9685					X		X			
Bonne Terre	4000					X		X			
Boonville	8202	X		X		X		X			X
Branson	6500					X		X			X
Brookfield	4769	X				X		X			X
Buffalo	2898					X		X			
Butler	4209	X				X		X	X		
California	4005					X		X			
Camdenton	2779										
Cameron	9788	X				X		X			
Canton	2517		X	X		X		X			X
Caruthersville	6760			X		X		X			X
Cassville	2890					X					
Centralia	4000		X	X		X		X			X
Charleston	4732			X		X		X			X
Chillicothe	8968		X			X		X			X
Crystal City	4247		X	X		X		X			X
Desoto	6375					X					
Dexter	7600			X		X		X			X
El Dorado Springs	3775										
Fayette	2793	X				X		X			X
Fredericktown	3950	X				X					X
Hermann	2674					X					
Higginsville	4682	X				X		X			X
Kearney	7000		X	X		X		X			
Lamar	4425	X				X		X			X
Licking	2982										
Macon	5538	X				X		X			X
Malden	4782					X					
Marceline	2568					X		X			
Moscow Mills	2900					X		X			X
Mountain View	4017					X					
Nevada	8601					X		X			X

**Table III. Treatment**

**Municipalities with population between 2,500 and 10,000**

Municipality	Population	Clarification		Iron Removal		Chlorination		Aeration		Sand Filter	
		Softening		Disinfection		Fluoridation		Membrane		Osmosis	
North Kansas City	4714		X	X	X	X		X		X	
Osage Beach	3949					X	X				
Owensville	2500					X					
Ozark	9665					X					
Pacific	5500		X				X				
Pagedale	3616										
Palmyra	3467		X	X	X	X	X	X			X
Park Hills	8252			X	X	X	X				X
Peculiar	4730										
Perryville	7667	X			X	X	X				X
Pevely	3768					X	X				
Platte City	5200										
Portageville	3295	X	X	X	X	X	X				X
Richmond	6116	X	X	X	X	X					X
Savannah	4762	X	X	X	X	X	X	X			X
Scott City	4591			X		X	X	X			X
Smithville	9000	X			X	X	X				X
St. Clair	4390										
St. James	3704						X				
Ste. Genevieve	4400		X	X	X	X		X			X
Sullivan	6351					X	X				
Tipton	3261						X				
Versailles	2565										
Warrenton	5280										
Waynesville	3507					X	X				
Willard	3177										
Wright City	2800										

**Municipalities with population under 2,500**

Municipality	Population	Clarification		Iron Removal		Chlorination		Aeration		Sand Filter	
		Softening		Disinfection		Fluoridation		Membrane		Osmosis	
Adrian	1780	X			X	X					X
Advance	1244					X		X			X
Albany	1937			X	X	X	X	X			X
Alton	668										
Anderson	1850					X					
Ash Grove	1430										
Belle	1344										
Bellflower	450					X					
Bernie	1777			X		X	X	X			
Big Lake	127										
Bloomsdale	460										
Branson West	406					X					
Brashear	316										
Braymer	950			X	X	X		X			X
Bucklin	526	X	X		X	X	X				X
Bunker	420										
Butterfield	416					X					
Cainsville	400										
Calhoun	491										
Callao	291										
Campbell	1883					X	X				
Clarksville	491		X		X	X		X			
Clarkton	1330					X					
Clever	1500					X					
Cole Camp	1038										
Collins	176					X					
Concordia	2360	X			X				X		
Corder	427										
Craig	309			X		X		X			X
Crane	1460						X				
Diamond	807										

**Table III. Treatment**

Municipalities with population under 2,500

Municipality	Population	Clarification		Iron Removal		Chlorination		Aeration		Sand Filter
		Softening		Disinfection		Fluoridation		Membrane	Osmosis	
Diggins	298									
Dixon	1570									
Downing	396									
East Lynne	400									
Ellington	1045					X				
Ellsinore	363					X				
Emerald Beach	250					X				
Everton	322									
Fairview	395					X				
Farber	418									
Fordland	864									
Freeburg	521									
Gallatin	1860	X		X		X	X			X
Gideon	1113					X				
Glasgow	1268		X	X	X	X	X	X		
Granby	2121									
Green City	688									
Hamilton	1813	X			X	X				
Hartville	607									
Hawk Point	459					X				
Hermitage	496	X								
Holcomb	696					X				
Houston	1992						X			
Hume	350									
Hunnewell	229									
Iberia	605					X				
Jasper	1011					X				
Kahoka	2241					X	X			
King City	1012		X			X	X			
Kingdom City	121									
Koshkonong	205					X				
La Grange	1007			X	X	X		X		
La Plata	1500				X		X			
Lake Tapawingo	843									
Lake Waukomis	917									
Lake Winnebago	902		X	X		X	X			
Lanagan	400					X				
Laredo	275									
Lathrop	2092									
Laurie	663									
Liberal	779					X		X		
Lincoln	1026									
Linn	1400									
Lockwood	989					X				
Louisburg	147					X				
Maitland	329					X				X
Mansfield	1349					X				
Marble Hill	1500				X	X				
Marthasville	837									
Memphis	2061			X	X	X	X	X		X
Merriam Woods	1142					X				
Meta	249					X				
Milan	1958	X		X	X	X	X			X
Miner	1056	X	X	X	X	X	X	X	X	X
Morley	792			X	X	X	X	X		X
Mound City	1193		X	X	X	X	X	X		X
Mountain View	2430					X				
Neelyville	407			X	X	X		X		X
New Bloomfield	599				X	X				
New Florence	654									
New Franklin	1145			X	X	X	X	X		X
New Hampton	349									
New Haven	1938									

**Table III. Treatment**

Municipalities with population under 2,500

Municipality	Population	Clarification		Iron Removal		Chlorination		Aeration		Sand Filter	
		Softening		Disinfection		Fluoridation		Membrane		Osmosis	
Newburg	423										
Newtown	209										
Norborne	805		X	X	X	X		X			X
Northmoor	399										
Norwood	552					X					
Oak Grove Village	382					X					
Oran	1248			X	X	X					X
Orrick	889		X								
Osceola	835					X					
Oterville	500					X					
Pierce City	1385					X					
Plattsburg	2400				X	X					X
Pleasant Hope	600										
Polo	582			X	X	X		X			X
Princeton	1046	X	X	X	X	X	X	X			X
Raymondville	442										
Rich Hill	1461	X			X	X					X
Ridgeway	500										
Rock Port	1395			X	X	X		X			X
Rogersville	1508				X	X					
Salisbury	1726		X	X	X	X	X	X			X
Seligman	877										
Sheldon	529					X					
Silex	206			X	X	X					
Skidmore	404			X	X	X		X			X
Slater	2083		X	X		X	X	X			X
Smithton	510					X					
South Greenfield	139										
Southwest City	840										
St. Mary	377			X		X		X			X
Steelville	1429										
Stewartsville	759										
Stockton	1960					X	X				
Stover	968				X						
Sweet Springs	1628										
Thayer	2201					X					
Truesdale	397										
Unionville	2040	X	X	X	X	X	X				X
Unity Village	150	X		X	X	X					X
Urbana	407										
Urich	499										
Vienna	618										
Wayland	425					X					
Weaubleau	518					X		X			
Weston	1631	X	X	X	X	X		X			X
Wheaton	700										
Willow Springs	2147					X					
Winona	1290										
Wood Heights	785										
Wyaconda	310	X			X	X	X				X
Wyatt	364			X		X		X			X

**Table IV. Tap/Connection Fees \***

**Municipalities with population over 10,000**

Municipality	Population	5/8"	3/4"	1"	2"	3"	4"	6"	8"
Cape Girardeau	36472	\$332	\$332	\$428	\$1,243				
Carthage	13000	\$100	\$100	\$100					
Eureka	10400	\$175	\$175						
Excelsior Springs	10800	\$325	\$325	\$425					
Farmington	13924	\$50							
Festus	12000		\$600						
Gladstone	26365	\$220	\$220	\$330	\$1,260				
Harrisonville	10000		\$173	\$173	\$350				
Kirksville	17304	\$50							
Kirkwood	27324		\$165	\$295	\$370				
Lake Ozark	14089	\$2,000		\$2,350					
Lebanon	12155								
Lee's Summit	85000	\$2,734	\$3,418	\$5,468	\$13,670	\$20,505	\$27,340	\$68,350	\$82,020
Marshall	13400		\$4,754						
Maryville	10600	\$150	\$150	\$300	\$700				
Nixa	16466	\$300	\$300	\$500	\$1,250				
Poplar Bluff	16651		\$973	\$1,316	\$3,871		\$17,611	\$21,420	\$25,432
Sedalia	20000	\$450		\$500	\$3,500	\$3,500	\$3,750	\$3,750	
Springfield	160000	\$800	\$800	\$800	\$4,115		\$6,900	\$10,880	\$108,880
St. Charles	64321		\$800	\$1,600	\$3,900	\$8,600	\$15,400	\$34,300	\$44,100
Webb City	10500	\$200							
Wentzville	23500		\$800	\$1,280	\$3,108	\$5,143	\$9,257	\$13,714	\$16,457
West Plains	11200		\$500						

**Municipalities with population between 2,500 and 10,000**

Municipality	Population	5/8"	3/4"	1"	2"	3"	4"	6"	8"
Ashland	3000	\$325	\$325						
Bethany	3005	\$75	\$75	\$75	\$75	\$75	\$75	\$75	\$75
Bolivar	9685	\$45							
Bonne Terre	4000								
Boonville	8202								
Branson	6500								
Brookfield	4769	\$25	\$25						
Buffalo	2898		\$225	\$375	\$650	\$1,350	\$1,350	\$2,350	
Butler	4209	\$400	\$400	\$1,600					
California	4005	\$50							
Camdenton	2779		\$575	\$700	\$1,000				
Cameron	9788	\$225	\$225	\$320	\$1,060	\$1,060	\$2,100		
Canton	2517	\$100	\$100	\$150	\$200	\$300	\$400	\$600	\$800
Caruthersville	6760	\$295	\$295	\$335	\$480				
Cassville	2890		\$250	\$450	\$1,300				
Centralia	4000	\$250							
Charleston	4732	\$50							
Chillicothe	8968	\$650	\$650	\$750	\$2,000				
Crystal City	4247								
Desoto	6375	\$1,000							
Dexter	7600		\$97	\$109	\$146				
El Dorado Springs	3775								
Fayette	2793	\$275	\$275						
Fredericktown	3950		\$1,915						
Hermann	2674	\$125	\$125	\$125					
Higginsville	4682	\$275	\$350	\$400	\$1,400				
Kearney	7000	\$2,460	\$2,460	\$3,460					
Lamar	4425	\$250							
Licking	2982	\$250	\$250	\$4,000	\$1,250				
Macon	5538	\$200	\$200	\$200					
Malden	4782		\$125	\$200	\$500				
Marceline	2568	\$250	\$300	\$1,200	\$1,800				
Moscow Mills	2900								
Mountain View	4017	\$300							
Nevada	8601	\$50							

**Table IV. Tap/Connection Fees**

Municipalities with population between 2,500 and 10,000

Municipality	Population	5/8"	3/4"	1"	2"	3"	4"	6"	8"
North Kansas City	4714	\$300	\$300	\$300	\$500	\$500	\$700	\$700	\$700
Osage Beach	3949	\$463							
Owensville	2500	\$200							
Ozark	9665	\$100	\$200	\$1,000	\$2,000				
Pacific	5500	\$175	\$175	\$175	\$350	\$350			
Pagedale	3616								
Palmyra	3467	\$125	\$125						
Park Hills	8252		\$500	\$750					
Peculiar	4730	\$800	\$800	\$800					
Perryville	7667								
Pevely	3768		\$700						
Platte City	5200	\$483	\$516	\$907	\$1,678	\$1,807			
Portageville	3295								
Richmond	6116	\$600	\$600	\$1,200					
Savannah	4762		\$500	\$600	\$1,600				
Scott City	4591		\$425	\$550	\$1,700				
Smithville	9000	\$3,000	\$3,000	\$3,000	\$3,600	\$4,000			
St. Clair	4390								
St. James	3704	\$13	\$13						
Ste. Genevieve	4400	\$250	\$250	\$350					
Sullivan	6351								
Tipton	3261		\$125	\$225					
Versailles	2565		\$947						
Warrenton	5280		\$450						
Waynesville	3507			\$1,308					
Willard	3177	\$450	\$450	\$900	\$2,000	\$3,000			
Wright City	2800	\$500							
Adrian	1780	\$1,200							
Advance	1244								
Albany	1937	\$50	\$50	\$50	\$50	\$50	\$50	\$50	\$50
Alton	668	\$250	\$250						
Anderson	1850	\$250	\$250	\$350	\$1,200				
Ash Grove	1430	\$75							
Belle	1344	\$200							
Bellflower	450	\$25	\$25	\$25	\$25	\$25	\$25	\$25	\$25
Bernie	1777	\$200	\$200	\$200					
Big Lake	127		\$750						
Bloomsdale	460	\$700		\$700					
Branson West	406	\$400	\$400	\$1,000	\$2,000	\$3,000	\$4,000	\$6,000	\$8,000
Brashear	316		\$300						
Braymer	950	\$300							
Bucklin	526		\$231						
Bunker	420	\$13	\$13						
Butterfield	416		\$300						
Cainsville	400	\$100							
Calhoun	491		\$250						
Callao	291	\$150							
Campbell	1883								
Clarksville	491	\$15	\$18						
Clarkton	1330	\$150							
Clever	1500	\$1,500	\$1,500						
Cole Camp	1038		\$200						
Collins	176	\$150							
Concordia	2360	\$350	\$350	\$1,000	\$2,500				
Corder	427		\$275						
Craig	309		\$500						
Crane	1460	\$135	\$135						
Diamond	807	\$525	\$525	\$525	\$525	\$525	\$525		
Diggins	298		\$300						
Dixon	1570		\$250	\$250					
Downing	396								
East Lynne	400		\$900						
Ellington	1045	\$150							
Ellsinore	363								
Emerald Beach	250	\$200	\$200	\$200					

**Table IV. Tap/Connection Fees**

Municipalities with population between 2,500 and 10,000

Municipality	Population	5/8"	3/4"	1"	2"	3"	4"	6"	8"
Everton	322	\$375	\$375						
Fairview	395	\$240							
Farber	418	\$200							
Fordland	864		\$250						
Freeburg	521		\$350						
Gallatin	1860	\$300	\$300						
Gideon	1113								
Glasgow	1268	\$30							
Granby	2121								
Green City	688								
Hamilton	1813	\$175	\$225	\$275					
Hartville	607								
Hawk Point	459	\$2,000							
Hermitage	496		\$350						
Holcomb	696		\$25	\$25					
Houston	1992	\$450							
Hume	350	\$500							
Hunnewell	229								
Iberia	605								
Jasper	1011								
Kahoka	2241	\$150							
King City	1012	\$500							
Kingdom City	121		\$500	\$800					
Koshkonong	205								
La Grange	1007		\$35	\$55					
La Plata	1500								
Lake Tapawingo	843	\$1,300	\$1,300						
Lake Waukomis	917		\$150						
Lake Winnebago	902		\$3,000	\$3,000					
Lanagan	400	\$500	\$500	\$500					
Laredo	275								
Lathrop	2092	\$2,500	\$2,500						
Laurie	663	\$450		\$833					
Liberal	779		\$366						
Lincoln	1026	\$400	\$400	\$400	\$400				
Linn	1400	\$200	\$200	\$200					
Lockwood	989	\$250	\$250	\$250					
Louisburg	147	\$500							
Maitland	329								
Mansfield	1349		\$250	\$300	\$500				
Marble Hill	1500	\$250							
Marthasville	837								
Memphis	2061								
Merriam Woods	1142		\$125						
Meta	249	\$30	\$30	\$30	\$30				
Milan	1958								
Miner	1056	\$300	\$300	\$500	\$1,000				
Morley	792		\$250						
Mound City	1193		\$50	\$75	\$100				
Mountain View	2430		\$75	\$75	\$250	\$250			
Neelyville	407	\$350							
New Bloomfield	599	\$400	\$400						
New Florence	654		\$100		\$200		\$300		
New Franklin	1145		\$375						
New Hampton	349								
New Haven	1938	\$200	\$250	\$600	\$800	\$1,000	\$1,500	\$2,500	
Newburg	423	\$50	\$50	\$50					
Newtown	209								
Norborne	805	\$350	\$350						
Northmoor	399	\$100							
Norwood	552								
Oak Grove Village	382								
Oran	1248								
Orrick	889	\$250	\$250	\$250					
Osceola	835	\$500							

**Table IV. Tap/Connection Fees**

Municipalities with population between 2,500 and 10,000

Municipality	Population	5/8"	3/4"	1"	2"	3"	4"	6"	8"
Oterville	500		\$400						
Pierce City	1385								
Plattsburg	2400		\$1,730	\$1,880	\$1,380				
Pleasant Hope	600								
Polo	582								
Princeton	1046		\$250	\$350	\$450				
Raymondville	442								
Rich Hill	1461	\$200			\$200				
Ridgeway	500	\$10							
Rock Port	1395	\$300	\$300	\$300					
Rogersville	1508	\$600	\$600		\$600				
Salisbury	1726	\$175	\$175	\$175					
Seligman	877	\$300	\$300	\$300	\$600	\$600	\$600	\$650	
Sheldon	529		\$300	\$350					
Silex	206	\$2,000							
Skidmore	404								
Slater	2083	\$50	\$50	\$50					
Smithton	510		\$350		\$1,500				
South Greenfield	139	\$150							
Southwest City	840								
St. Mary	377								
Steelville	1429	\$200	\$200	\$200	\$300	\$300	\$600	\$700	\$700
Stewartsville	759	\$500							
Stockton	1960	\$100							
Stover	968		\$500						
Sweet Springs	1628		\$100						
Thayer	2201								
Truesdale	397	\$500	\$500	\$500	\$950	\$1,100	\$1,600		
Unionville	2040		\$850	\$1,029	\$1,729				
Unity Village	150								
Urbana	407								
Urich	499		\$500						
Vienna	618	\$500	\$500						
Wayland	425		\$300						
Weaubleau	518	\$234							
Weston	1631		\$1,500						
Wheaton	700	\$150	\$150	\$150					
Willow Springs	2147								
Winona	1290								
Wood Heights	785	\$1,500							
Wyaconda	310	\$300	\$300	\$300					
Wyatt	364		\$200						

\* Note some municipalities indicated that their tap fees are dependant upon materials costs, and labor these cities did not always supply a set fee for particular tap sizes. This was especially true for larger dimension taps.

**Table V. Deposit Amounts and Policies**

**Municipalities with population over 10,000**

Municipality	5/8"	3/4"	1"	2"	3"	Deposit Refund after time period	Homeowners refunded not renters	Renter Deposit More	Renter Deposit Amount	Landlords Owe for Tenants
Cape Girardeau	\$75					Yes	No	No		No
Carthage	\$10					Yes	No	Yes	\$20	No
Eureka	\$25	\$25				No	No	Yes	\$50	Yes
Excelsior Spr.						Yes	No	No		No
Farmington	\$25					Yes	No	No		
Festus		\$50				Yes	No	Yes	\$100	Yes
Gladstone	\$50	\$50	\$50			No	No	No		No
Harrisonville	\$50	\$50				Yes	No	No		No
Kirksville	\$60					Yes	No	No		No
Kirkwood						Yes	No		\$20	No
Lake Ozark	\$75		\$300			Yes	No	No		Yes
Lebanon	\$20	\$20				No	No			No
Lee's Summit										No
Marshall						Yes	No	No		No
Maryville						Yes	No	No		Yes
Nixa						No	No	No		No
Poplar Bluff						Yes	No	No		No
Sedalia						No		No		No
Springfield						Yes	No	No		No
St. Charles						Yes	Yes	Yes	\$100	Yes
Webb City	\$100					Yes		No		Yes
Wentzville	\$50					Yes	No	No		Yes
West Plains							No		\$10	No

**Municipalities with population between 2,500 and 10,000**

Municipality	5/8"	3/4"	1"	2"	3"	Deposit Refund after time period	Homeowners refunded not renters	Renter Deposit More	Renter Deposit Amount	Landlords Owe for Tenants
Ashland	\$50	\$50				No	No	No		No
Bethany						No	No	Yes	\$50	Yes
Bolivar	\$80					Yes	No	No		No
Bonne Terre	\$75					Yes	No	No		Yes
Boonville	\$113	\$113	\$207	\$1,087	\$1,087	Yes	No	No		No
Branson	\$25	\$25	\$400	\$1,000	\$2,000	No	No	No		Blank
Brookfield						Yes	No	No		No
Buffalo		\$15	\$15			No	No	Yes	\$75	No
Butler						No		Yes	\$175	No
California	\$100					No	No	Yes	\$150	No
Camdenton		\$25				No	No	Yes	\$100	No
Cameron	\$50					No	No	No		No
Canton	\$75	\$75	\$75	\$75	\$75	No	No	No		No
Caruthersville	\$50					No	No	No		No
Cassville		\$75				No		No		No
Centralia	\$20					Yes	No	No		No
Charleston	\$80					No	No	No	\$80	No
Chillicothe	\$25	\$25				No	No	No		No
Crystal City	\$100					No	No	Yes	\$100	Yes
Desoto						Yes	Blank	Yes	\$100	Yes
Dexter						Yes	No	No		No
El Dorado Spr.	\$35					No	No	No		No
Fayette	\$50	\$50				Yes	Yes	No		Yes
Fredericktown		\$50	\$100	\$100		Yes	No	No		No
Hermann	\$10	\$10	\$10			Yes	No	No		No
Higginsville	\$20					No	No	No		No
Kearney	\$75	\$75	\$75			No	No	No		No
Lamar	\$50					No	No	No		No
Licking	\$75	\$75	\$75	\$75		No	No	No		Yes
Macon						Yes	No	Yes		No
Malden		\$50	\$50	\$50		Yes	No	No		No
Marceline						Yes	Yes	No		No
Moscow Mills	\$90					No	No	No		Yes
Mountain View						No	No	No		No
Nevada	\$50					Yes	No	No		No

**Table V. Deposit Amounts and Policies**

**Municipalities with population between 2,500 and 10,000**

Municipality	5/8"	3/4"	1"	2"	3"	Deposit Refund after time period	Homeowners refunded not renters	Renter Deposit More	Renter Deposit Amount	Landlords Owe for Tenants
North K.C.	\$50	\$100	\$100	\$100	\$100	No	No	No		Yes
Osage Beach						Yes				Yes
Owensville	\$100					No	No	No		Yes
Ozark	\$225	\$285	\$450	\$575	\$1,030	No	No	Yes	\$75	No
Pacific	\$75					Yes	Yes			Yes
Pagedale										
Palmyra	\$25					No	No	No	\$25	Yes
Park Hills		\$50	\$50			No	No			No
Peculiar	\$100	\$100	\$100			Yes	No	Yes	\$125	No
Perryville						No	Yes	Yes		No
Pevely		\$60				Yes		Yes	\$100	No
Platte City	\$100					Yes	No	No		Yes
Portageville		\$80				Yes	No	No		No
Richmond	\$100	\$100	\$100			No	No	Yes	\$150	Yes
Savannah		\$50				No	No	Yes	\$75	Yes
Scott City		\$25				No	No	Yes	\$50	No
Smithville						No	No	No		No
St. Clair	\$100					No	No	No		Yes
St. James	\$50					No	No	No		No
Ste. Genevieve	\$50					Yes	Yes	No		Yes
Sullivan						No	No	No		No
Tipton		\$5	\$5			No	No	Yes	\$50	No
Versailles	\$20	\$20						No		No
Warrenton		\$100				Yes	No	No		No
Waynesville						Yes	No	No		No
Willard	\$75					Yes	Yes	No		No
Wright City						No		No	\$100	No

**Municipalities with population under 2,500**

Municipality	5/8"	3/4"	1"	2"	3"	Deposit Refund after time period	Homeowners refunded not renters	Renter Deposit More	Renter Deposit Amount	Landlords Owe for Tenants
Adrian	\$150					No	No	No		No
Advance	\$67		\$67	\$67		No	Blank	No		No
Albany	\$50	\$50	\$50	\$50	\$50	Yes	No	No		No
Alton	\$50	\$50				No	No	Yes	\$100	No
Anderson	\$80	\$80	\$80	\$80		Yes	No	No		Yes
Ash Grove	\$75					No	No	No		No
Belle	\$50					Yes	Blank	No	\$5	Yes
Bellflower	\$150	\$150	\$150	\$150	\$150	No	No	No		No
Bernie	\$20					No	Blank	Yes	\$30	No
Big Lake						No	No	No		Yes
Bloomsdale	\$50		\$50			No	No	No		Yes
Branson West	\$50					No	No	No		No
Brashear		\$100				Yes	Blank	No		No
Braymer	\$50					No	No	Yes	\$100	Yes
Bucklin		\$50				No	No	Yes	\$100	No
Bunker	\$25	\$25				Yes	No	No		No
Butterfield		\$75				No	No	Yes	\$100	Yes
Cainsville										
Calhoun		\$50				No	No	Yes	\$100	No
Callao	\$100					Yes	Yes	No		Yes
Campbell	\$5					No	No	No		No
Clarksville						Yes		Yes	\$150	Yes
Clarkton						Yes	No	No		No
Clever	\$60	\$60						No		No
Cole Camp						Blank	Blank	Blank		Yes
Collins	\$75					No	No	No		No
Concordia						No	No	No		Yes
Corder		\$76				No	No	No		No
Craig		\$40				Yes	No	No		Yes
Crane	\$30					No	No	No		No
Diamond						No	No	Yes	\$50	No

**Table V. Deposit Amounts and Policies**

Municipalities with population under 2,500

Municipality	5/8"	3/4"	1"	2"	3"	Deposit Refund after time period	Homeowners refunded not renters	Renter Deposit More	Renter Deposit Amount	Landlords Owe for Tenants
Diggins		\$85				No	No	Yes	\$85	Yes
Dixon		\$50	\$50			No	No	No		No
Downing	\$100					No	No			Yes
East Lynne		\$100				No	No	No		No
Ellington	\$55					No	No	No		Yes
Ellsinore	\$50					No	No	No		No
Emerald Beach						Blank	Blank	Blank		No
Everton	\$30	\$30				No	No	Yes	\$60	Yes
Fairview						No		No		No
Farber	\$150					Yes	Yes	No		Yes
Fordland		\$50				No	No	Yes	\$100	Yes
Freeburg		\$125				No	No	No		No
Gallatin	\$100	\$100				Yes	No			No
Gideon						No	No	No		No
Glasgow	\$150					Yes		No		No
Granby						No	No	Yes	\$50	No
Green City						No	No			Yes
Hamilton						No	No	No		No
Hartville	\$50					Yes		No		No
Hawk Point						No	No	No		Yes
Hermitage		\$125				Yes	Yes	No		Yes
Holcomb		\$100	\$100			No	No	No		Yes
Houston	\$25					Yes		No		Yes
Hume	\$200					Yes	Yes	No		Yes
Hunnewell	\$75					No	No	No		No
Iberia	\$100					No	No	No		No
Jasper		\$50				No	No			Yes
Kahoka	\$50					No	No	Yes	\$125	No
King City	\$75					Yes		Yes	\$150	No
Kingdom City		\$25	\$25			No	No	No		No
Koshkonong						No	No	No		No
La Grange						No	No	Yes	\$45	Yes
La Plata	\$100					No	Yes	No		Yes
Lk. Tapawingo	\$100	\$100				Yes	No	Yes	\$150	Yes
Lk. Waukomis						No				Yes
Lk. Winnebago		\$50	\$50			No	No	Yes	\$100	Yes
Lanagan	\$80	\$80	\$80			No	No	No		No
Laredo	\$43					Yes	No	No		Yes
Lathrop	\$100					Yes	Yes	Yes	\$200	Yes
Laurie	\$50					No	No	Yes	\$75	No
Liberal		\$50				Yes	No	No		No
Lincoln						Yes	No	No		Yes
Linn	\$100	\$100	\$100			Yes	No	No		Yes
Lockwood	\$55	\$55	\$55			No	Yes			No
Louisburg	\$100					No	No	No		Yes
Maitland						No	No	Yes	\$150	Yes
Mansfield		\$15				No	No	Yes	\$25	Yes
Marble Hill	\$75					No	No	No		Yes
Marthasville						No		No		No
Memphis	\$30					No	No	Yes	\$60	No
Merriam Woods		\$100				No	No	No		Yes
Meta	\$30					Yes	No	No		Yes
Milan						No	No	No		No
Miner	\$20	\$20				No	No	Yes	\$75	No
Morley		\$45				Yes	No	Yes	\$75	Yes
Mound City		\$50				No	No	No		Yes
Mountain View		\$5	\$5			Yes	Yes	Yes	\$10	No
Neelyville	\$100					Yes	No	No		No
New Bloomfield	\$100	\$100				Yes	No	No		Yes
New Florence										Yes
New Franklin		\$75				No	No	No		Yes
New Hampton	\$75					No	No			No
New Haven						Yes				Yes
Newburg	\$25	\$25	\$25			No	No	No		No

**Table V. Deposit Amounts and Policies**

Municipalities with population under 2,500

Municipality	5/8"	3/4"	1"	2"	3"	Deposit Refund after time period	Homeowners refunded not renters	Renter Deposit More	Renter Deposit Amount	Landlords Owe for Tenants
Newtown	\$100					Yes	No	No		Yes
Norborne						Yes	Yes	No		No
Northmoor						Yes	No	No		No
Norwood		\$75	\$100	\$200		No	No	No		Yes
Oak Grove V.								No		Yes
Oran	\$50					No	No	No		No
Orrick	\$100	\$100	\$100			Yes	No	No		Yes
Osceola						Yes	No			No
Oterville		\$125				No	No	No		Yes
Pierce City						No	No	Yes	\$80	No
Plattsburg		\$25				No	No	Yes	\$27	Yes
Pleasant Hope						No	No	Yes	\$40	Yes
Polo	\$100					No	No	No		No
Princeton		\$55					No	No		Yes
Raymondville	\$75					No	No		\$5	Yes
Rich Hill	\$50			\$50		No	Yes	Yes	\$50	No
Ridgeway	\$100					No	No	No		Yes
Rock Port						Yes	No	No		No
Rogersville	\$87	\$87		\$90		No	No	No		Yes
Salisbury	\$150	\$150	\$150			No	No	No		Yes
Seligman	\$75					No	No	No		No
Sheldon		\$25				No	No	Yes	\$100	
Silex						No	No	No		Yes
Skidmore						No	No	Yes	\$150	Yes
Slater	\$75	\$75	\$75			No	No	No		No
Smithton		\$75				No	No	No		No
St. Greenfield	\$50					No	No	No		Yes
Southwest City						Yes	No	No		No
St. Mary						No	No	Yes	\$75	Yes
Steelville						No	No			No
Stewartville	\$150						Yes	No		No
Stockton	\$50					No		No		Yes
Stover		\$50				Yes	Yes	No		Yes
Sweet Springs		\$100				Yes	Yes	No		No
Thayer	\$25					Yes	Yes	No		No
Truesdale	\$75					No	No	No		Yes
Unionville	\$240					Yes		No		Yes
Unity Village						No				
Urbana	\$100					Yes	Yes	No		No
Urich						Yes		Yes	\$100	Yes
Vienna	\$100	\$100				Yes	No	No		No
Wayland						No	No	Yes	\$75	Yes
Weaubleau	\$50					Yes	No	Yes	\$100	No
Weston		\$70				No	No	No		No
Wheaton						No	No	Yes	\$50	Yes
Willow Springs		\$10				Yes	No	No		No
Winona						No	No	No		No
Wood Heights	\$100					No	No	Yes	\$125	No
Wyaconda	\$35	\$35	\$35			Yes	Yes	Yes	\$75	Yes
Wyatt		\$50				No	No	Yes	\$100	Yes

**Table VI. Late Payment Penalties and Policies**

**Municipalities with population over 10,000**

Municipality	Population	Penalty for late pay		Service shut	Reconnect Fee	Reconnect Fee Increase 2nd offense	Connect During Off hours	Has Fee Connect Off Hours	Fee for Off Hour Connection
		Flat Fee	Percentage	off after x days					
Cape Girardeau	36472		10%	60	\$30	No	Yes	Yes	\$15
Carthage	13000		10%	15	\$25	No	Yes	Yes	\$50
Eureka	10400			60	\$25	No	Yes	Yes	\$45
Excelsior Springs	10800	\$35		60	\$35	No	No	Yes	Yes
Farmington	13924		2%	10	\$50	No	Yes	Yes	\$50
Festus	12000		10%	30	\$25	Yes	No		
Gladstone	26365	\$3	5%	26	\$25	No	Yes	Yes	\$35
Harrisonville	10000		5%	25	\$100	No	Yes	Yes	\$50
Kirkville	17304		10%	14		No	Yes	Yes	\$25
Kirkwood	27324		2%	120	\$50	No	Yes	Yes	\$9
Lake Ozark	14089		2%	60	\$100	No	No	No	No
Lebanon	12155		10%	15	\$15	No	No	Yes	\$25
Lee's Summit	85000		5%	25	\$25	No	Yes	Yes	\$10
Marshall	13400		5%	5	\$25	No	Yes	Yes	\$20
Maryville	10600		10%	16	\$30	No	Yes	Yes	\$50
Nixa	16466		5%	45	\$25	No	No	No	No
Poplar Bluff	16651			7	\$16	No	Yes	Yes	\$16
Sedalia	20000	\$30		60	\$30	No	Yes	Yes	\$10
Springfield	160000		10%	45	\$10	No	Yes	Yes	\$20
St. Charles	64321	\$5	10%	45	\$65	No	Yes	Yes	\$100
Webb City	10500		5%	23	\$35	No	Yes	Yes	\$15
Wentzville	23500		2%	40	\$30	No	Yes	Yes	\$60
West Plains	11200	\$10		8	\$20	No	Yes	Yes	\$20

**Municipalities with population between 2,500 and 10,000**

Municipality	Population	Penalty for Late Pay		Service shut	Reconnect Fee	Reconnect Fee Increase 2nd offense	Connect During Off hours	Has Fee Connect Off Hours	Fee for Off Hour Connection
		Flat Fee	Percentage	off after x days					
Ashland	3000		10%	10	\$15	No	Yes	Yes	\$30
Bethany	3005		8%	10		No	No	No	No
Bolivar	9685		10%	20	\$10	No	No	No	No
Bonne Terre	4000	\$3	5%	45	\$30	No	Yes	Yes	\$20
Boonville	8202	\$10		5	\$25	No	Yes	Yes	\$35
Branson	6500		5%	30	\$20	No	Yes	No	No
Brookfield	4769		10%	30	\$15	No	No		
Buffalo	2898		10%	30	\$50	No	No		
Butler	4209		10%	10	\$20	No	Yes	Yes	\$20
California	4005		10%	10	\$20	No	Yes	No	No
Camdenton	2779		2%	15	\$25	No	Yes	Yes	\$75
Cameron	9788		5%	15	\$25	No	No	No	No
Canton	2517		9%	25	\$75	No	No	Yes	Yes
Caruthersville	6760	\$10		5	\$25	No	Yes	No	No
Cassville	2890		10%		\$25	No	No		
Centralia	4000		5%	10	\$25	No	Yes	Yes	\$25
Charleston	4732	\$10			\$50	No	Yes	Yes	\$35
Chillicothe	8968		10%	21	\$25	No	Yes	Yes	\$25
Crystal City	4247	\$10		9	\$20	No	Yes	Yes	\$50
Desoto	6375		10%	30	\$20	No	Yes	Yes	\$20
Dexter	7600	\$5		5	\$20	No	Yes	Yes	\$35
El Dorado Springs	3775		5%	9	\$40	No	Yes	Yes	\$40
Fayette	2793		10%	20	\$35	No	Yes	Yes	\$35
Fredericktown	3950		10%	15	\$50	No	Yes	Yes	\$25
Hermann	2674		10%	11	\$10	No	No		
Higginsville	4682	\$10		10	\$20	No	Yes	Yes	\$50
Kearney	7000		10%	30	\$25	No	Yes	Yes	\$25
Lamar	4425		10%	5	\$750	No	Yes	Yes	\$25
Licking	2982		10%	6	\$35	No	No		
Macon	5538		10%	5	\$45	No	Yes	Yes	\$55
Malden	4782		5%	7	\$30	No	Yes	Yes	\$25
Marceline	2568		10%		\$25	No	Yes	No	No
Moscow Mills	2900		10%	45	\$20	No	Yes	Yes	\$20
Mountain View	4017		10%	20	\$25	Yes	Yes	No	No
Nevada	8601		10%	45	\$25	No	No		

**Table VI. Late Payment Penalties and Policies**

**Municipalities with population between 2,500 and 10,000**

Municipality	Population	Penalty for late pay		Service shut	Reconnect Fee	Reconnect Fee Increase 2nd offense	Connect During Off hours	Has Fee Connect Off Hours	Fee for Off Hour Connection
		Flat Fee	Percentage	off after x days					
North Kansas City	4714		10%	10	\$30	No	No	No	No
Osage Beach	3949		1%	45	\$325	No			
Owensville	2500	\$10		7	\$25	No	Yes	No	No
Ozark	9665		10%	21	\$35	No	Yes	Yes	\$40
Pacific	5500			60	\$25	No		No	No
Pagedale	3616								
Palmyra	3467		10%	10	\$25	No	Yes	Yes	\$25
Park Hills	8252			45	\$50	No	Yes	Yes	\$25
Peculiar	4730		10%	21	\$25	No	Yes	Yes	\$50
Perryville	7667	\$5	10%	15	\$50	No	No		
Pevely	3768		5%	45	\$25	Yes	Yes	Yes	\$50
Platte City	5200		10%	5	\$25	No	No	No	No
Portageville	3295		10%	30	\$40		No		
Richmond	6116		10%	10	\$10	Yes	No	Yes	Yes
Savannah	4762		10%	10	\$20	No	No	No	No
Scott City	4591		10%	10	\$30	Yes	No		
Smithville	9000		10%	10	\$50	No	No	No	No
St. Clair	4390		10%	45	\$25	No	No		
St. James	3704		10%	10	\$10	No	Yes	Yes	\$30
Ste. Genevieve	4400		10%	15	\$20	No	No	Yes	\$30
Sullivan	6351	\$10		10	\$25	No	Yes	Yes	\$25
Tipton	3261		10%	30	\$50	No	Yes	No	No
Versailles	2565		10%	45	\$50	No	No	No	No
Warrenton	5280		8%	60	\$50	No	Yes	Yes	\$22
Waynesville	3507		10%		\$25	No	Yes	Yes	\$15
Willard	3177		10%	15	\$50	No	No	No	No
Wright City	2800		5%	30	\$25	No	No		

**Municipalities with population under 2,500**

Municipality	Population	Penalty for late pay		Service shut	Reconnect Fee	Reconnect Fee Increase 2nd offense	Connect During Off hours	Has Fee Connect Off Hours	Fee for Off Hour Connection
		Flat Fee	Percentage	off after x days					
Adrian	1780		15%		\$25	No	No	No	No
Advance	1244		10%	10	\$40	No	Yes	No	No
Albany	1937		3%	4	\$25	No	Yes	Yes	\$50
Alton	668		10%	7	\$25	No	No	No	No
Anderson	1850		2%	60	\$20	No	No	No	No
Ash Grove	1430		10%	10	\$35	No	No	No	No
Belle	1344			10	\$25	No	No	No	No
Bellflower	450		10%	10	\$40	No	Yes	Yes	Yes
Bernie	1777		10%	15		No	No	No	No
Big Lake	127	\$10		60	\$25	No	Yes	No	No
Bloomsdale	460		10%	60	\$70	No	Yes	No	No
Branson West	406		20%	7	\$45	No	No		
Brashear	316		10%	30	\$10	No	Yes	Yes	\$10
Braymer	950		10%	30	\$25	No	Yes	No	No
Bucklin	526			10	\$10	Yes	Yes	No	No
Bunker	420		10%	45	\$13	No	No	No	No
Butterfield	416	\$3		30	\$15	No	No		
Cainsville	400								
Calhoun	491		5%	30	\$25	No	Yes	Yes	\$25
Callao	291	\$5		10	\$25	No	Yes	No	No
Campbell	1883		10%	4	\$25	No	No		
Clarksville	491		5%	6	\$50	No	Yes	No	No
Clarkton	1330	\$5		30	\$30	No	Yes	No	No
Clever	1500			30	\$25	No	No		
Cole Camp	1038	\$5		15	\$50	No	No	No	No
Collins	176		10%	15	\$25	No	Yes	No	No
Concordia	2360		10%	10	\$25	No	No		
Corder	427		10%	7	\$20	No	No	No	No
Craig	309		10%	60	\$25	No	Yes	No	No
Crane	1460		10%	20	\$10	No	Yes	No	No

**Table VI. Late Payment Penalties and Policies**

Municipalities with population under 2,500

Municipality	Population	Penalty for late pay		Service shut off after x days	Reconnect Fee	Reconnect Fee Increase 2nd offense	Connect During Off hours	Has Fee Connect Off Hours	Fee for Off Hour Connection
		Flat Fee	Percentage						
Diamond	807		4%	5	\$25	No	Yes	No	No
Diggins	298		10%	30	\$50	No	No	No	No
Dixon	1570		10%	15	\$35	No	No	No	No
Downing	396	\$3			\$5	No	Yes	No	No
East Lynne	400		5%	10	\$75	No	No	Yes	Yes
Ellington	1045		5%	20	\$50	No	No	No	No
Ellsinore	363		10%	20	\$10	No	No		
Emerald Beach	250		10%		\$100	No	No	No	No
Everton	322		2%	10	\$15	No	Yes	Yes	\$25
Fairview	395		10%	45	\$25	No	No	No	No
Farber	418		10%	25	\$25	No	Yes	No	No
Fordland	864		1%	30	\$50	No	Yes	No	No
Freeburg	521		5%	60	\$25	No	Yes	No	No
Gallatin	1860		10%	10	\$50	No	No	No	No
Gideon	1113		10%	25	\$25	No	No	No	No
Glasgow	1268		10%	3	\$25	No	No	No	No
Granby	2121		10%	15	\$8	No	No		
Green City	688		10%	10	\$50	No	No		
Hamilton	1813	\$25		60	\$50	No	No	No	No
Hartville	607		10%	45	\$10	No	Yes	No	No
Hawk Point	459			15	\$15	Yes	No		
Hermitage	496		10%	10	\$25	No	No	No	No
Holcomb	696		10%	60	\$25	No	No	No	No
Houston	1992								
Hume	350		10%	30	\$75	No	Yes	No	No
Hunnell	229		5%	11	\$10	No	Yes	No	No
Iberia	605	\$5	25%	15	\$25	No	No	No	No
Jasper	1011	\$5	3%		\$10				
Kahoka	2241		10%	21	\$15	No	Yes	Yes	\$30
King City	1012			30	\$20	No	No	No	No
Kingdom City	121		10%	10	\$50	No	No	No	No
Koshkonong	205	\$25		7	\$25	No	Yes	No	No
La Grange	1007		25%	45	\$25	No	No	No	No
La Plata	1500		10%	20	\$25	No	Yes	Yes	Yes
Lake Tapawingo	843		10%	10	\$40	No	No		
Lake Waukomis	917		10%	10	\$10	No	No		
Lake Winnebago	902		10%	20	\$100	No	No		
Lanagan	400		15%	45	\$40	No	Yes	Yes	\$15
Laredo	275		10%	10	\$73	No	No	Yes	Yes
Lathrop	2092		5%	30	\$35	No	No	No	No
Laurie	663		10%	30	\$35	No	No	No	No
Liberal	779		10%	30	\$25	No	No	No	No
Lincoln	1026		20%	40	\$25	No	No	No	No
Linn	1400		10%	30	\$25	No	No	No	No
Lockwood	989		10%	20	\$25	No	No		
Louisburg	147			20	\$25	No	Yes	No	No
Maitland	329	\$10		15	\$25	No	No	No	No
Mansfield	1349		5%	30	\$25	No	No		
Marble Hill	1500		10%	5	\$20	No	No	No	No
Marthasville	837		10%	60	\$30	No	Yes	No	No
Memphis	2061		10%	15	\$25	No	Yes	Yes	\$25
Merriam Woods	1142	\$10		30	\$50	No	No		
Meta	249	\$10		15	\$60	No	No	Yes	\$30
Milan	1958		10%	10	\$10	No	Yes	No	No
Miner	1056		5%	10	\$25	No	No		
Morley	792		10%	10	\$25	No	No	No	No
Mound City	1193	\$3		20	\$20	No	Yes	Yes	\$15
Mountain View	2430	\$10		20	\$15	Yes	No	No	No
Neelyville	407		10%	15	\$25	No	Yes	No	No
New Bloomfield	599		10%	10	\$100	No	Yes	No	No
New Florence	654		10%	10	\$25	No	No	No	No
New Franklin	1145		10%	20	\$60	No	No	No	No
New Hampton	349		5%	30	\$75	No	Yes	No	No
New Haven	1938		10%	10	\$20	No	No	No	No

**Table VI. Late Payment Penalties and Policies**

Municipalities with population under 2,500

Municipality	Population	Penalty for late pay		Service shut off after x days	Reconnect Fee	Reconnect Fee Increase 2nd offense	Connect During Off hours	Has Fee Connect Off Hours	Fee for Off Hour Connection
		Flat Fee	Percentage						
Newburg	423		10%	20	\$35	No	No	Yes	Yes
Newtown	209		10%	60	\$25	No	Yes	No	No
Norborne	805		10%	30	\$25	No	No	No	No
Northmoor	399		5%	15	\$20	No	Yes	Yes	\$10
Norwood	552		10%	25	\$50	No	No	No	No
Oak Grove Village	382	\$5		60	\$20	No	Yes	No	No
Oran	1248		10%	20	\$50	No	No	No	No
Orrick	889		10%		\$25	Yes	No		
Osceola	835		10%		\$20	No	Yes	Yes	\$20
Otterville	500	\$5		8	\$25	No	No	No	No
Pierce City	1385		2%	10	\$15	No	No	No	No
Plattsburg	2400		10%	40	\$25	No	Yes	Yes	\$25
Pleasant Hope	600		2%	30	\$25	No	Yes	No	No
Polo	582		10%	20	\$25	No	Yes	No	No
Princeton	1046	\$10	10%	40	\$40	No	Yes	Yes	\$80
Raymondville	442				\$75	No	No	No	No
Rich Hill	1461		10%	5	\$20	No	Yes	Yes	\$40
Ridgeway	500		10%	10	\$25	No	Yes	No	No
Rock Port	1395		10%	10	\$30	No	Yes	Yes	\$30
Rogersville	1508		10%	16	\$25	No	No	No	No
Salisbury	1726		10%	15	\$40	No	Yes	Yes	\$30
Seligman	877		10%	60	\$25	No	No		
Sheldon	529	\$4		30	\$30	No	Yes	Yes	\$70
Silex	206		10%		\$30	No	Yes	No	No
Skidmore	404	\$10		16	\$25	No	Yes	No	No
Slater	2083		5%	10	\$15	No	Yes	Yes	\$10
Smithton	510	\$10		7	\$25	No	Yes	Yes	\$10
South Greenfield	139		10%	30	\$25	No	Yes	No	No
Southwest City	840			14	\$25	No	No	No	No
St. Mary	377		10%	10	\$20	Yes	Yes	Yes	Yes
Steelville	1429		10%	5	\$25	Yes	Yes	Yes	\$65
Stewartsville	759		10%	15	\$25	No	Yes	No	No
Stockton	1960		10%	20	\$20	No	Yes	No	No
Stover	968		10%	11	\$20	No	No	No	No
Sweet Springs	1628		10%	10	\$25	No	No	No	No
Thayer	2201		10%	20	\$25	No	No	No	No
Truesdale	397		5%	10	\$25	No	No		
Unionville	2040		10%	30	\$30	No	No	Yes	\$30
Unity Village	150								
Urbana	407		10%	14	\$25	No	Yes	Yes	\$25
Urich	499	\$10		10	\$50	Yes	No		
Vienna	618		10%	10	\$25	Yes	Yes	No	No
Wayland	425			20	\$50	No	No		
Weaubleau	518		10%	6	\$25	Yes	No	No	No
Weston	1631		15%	15	\$25	Yes	Yes	No	No
Wheaton	700		10%	30	\$50	No	No	No	No
Willow Springs	2147		10%	11	\$20	No	Yes	Yes	\$30
Winona	1290		5%	15	\$20	No	Yes	No	No
Wood Heights	785		10%	7	\$100	No	No		
Wyaconda	310		2%	10	\$30	No	No		
Wyatt	364		10%	22	\$20	No	No	No	No

**Table VII. User Fee Schedule**

**Municipalities with population over 10,000**

Municipality	Charge Basis	Minimum Charge	Volume for Minimum Fee Gallons	Cubic Feet	Rate Schedule (ccf=100 cubic feet, c.f = cubic feet gals.=Gallons)
Cape Girardeau	cubic feet	\$6.18	0		Minimum charge based on meter size 5/8" -- \$6.18; 3/4" -- \$9.51; 1" -- \$12.83; 1 1/2" -- \$24.02; 2" -- \$36.7; 3" -- \$68.73; 4" -- \$113.40; + \$1.874 per ccf <60 ccf; + \$1.444 per ccf for > 60 ccf
Carthage	cubic feet	\$8.44	100		Res.: Min. \$8.44 includes 100 cf; + \$2 per ccf (2-4 ccf); + \$1.89 per ccf (5-10 ccf); + \$1.79 per ccf thereafter; Com: Min. \$19.48 includes 100 cf; + \$2.10 per ccf (2-40 ccf); + \$2.00 per ccf (41-100 ccf); + \$1.79 per ccf (101-1000 ccf); + \$1.37 per ccf thereafter
Eureka	gallons	\$6.03	2000		\$6.29 includes first 2,000 gals; + \$1.08 per 1000 (next 3000); + \$.90 per 1000 (next 5000); + \$2.18 per 1,000 thereafter
Excelsior Spgs.	gallons	\$5.30			\$2.79 per 1,000 gals (first 30,000); \$2.71 per 1,000 thereafter
Farmington	cubic feet	\$4.25		200	minimum of \$4.25 (5/8" & 3/4" meters), \$11.50 (1" meter), \$19.00 (1 1/2" meter), \$47.25 (2" meter), \$94.25 (3" meter), \$159.25 (4" meter), \$375.24 (6" meter) additional \$4.25 for upto 200 c.f.; \$1.10 per 100 c.f. thereafter
Festus	gallons	\$8.14	1000		\$8.14 per thousand
Gladstone	gallons	\$2.67	0		Minimum \$5.34 + \$2.89 per 1000 gals.
Harrisonville	gallons	\$9.00	1000		\$9 minimum includes first 1000; + \$.4835 per 100 gals thereafter
Kirksville	cubic feet	\$6.63		300	\$6.96 minimum includes 300 c.f; plus +\$2.32 per 100 c.f. thereafter
Kirkwood	cubic feet	\$6.15	0	0	Minimum charge based on meter size: 5/8 -- \$6.15; 3/4 -- \$6.87; 1 -- \$8.31; 1 1/2 -- \$11.90; 2 -- \$16.20; 3 -- \$27.68; 4 -- \$40.59; 6 -- \$76.48; 8 -- \$119.54; 10 -- \$176.96; 12 -- \$234.36; water usage - \$1.8353 per 100 c.f.
Lake Ozark	gallons	\$10.82			Res. \$10.82 + \$.004996 per gal; Com \$21.78 + .006438 per gal
Lebanon	gallons	\$3.00			Res. -- \$3 min.; + \$1.70 per 1000gals (first 7,000 gals); + \$2.35 per 1,000 thereafter; Com. -- 5/8" or 1" \$10.50 meter fee; 2" or larger \$28.00; + \$1.60 per 1000gals (first 7,000 gals); + \$2.35 per 1000 gals (next 93,000); + \$.70 per 1000 thereafter
Lee's Summit	gallons	\$5.35	0		Minimum charge based on meter size: 5/8" & 3/4" -- \$5.35; 1" -- \$6; 1 1/2" -- \$6.45; 2" -- \$8.10; 3" -- \$11; 4" -- \$24; 6" -- \$37; 8" -- \$55; 10" -- \$133.75; Water usage Res. Nov to April \$2.71 per 1000 (first 1000); + \$2.87 per 1000 (next 8000); + \$3.02
Marshall	gallons	\$9.00	0		Min charge based on meter size -- 1" or less \$9; 2" -- \$10; 3" or 4" \$12.50; > 4" -- \$15; + \$.225 per 100 gals (first 10000); plus \$.167 (next 190,000); plus +\$.133 per 100 (next 4,800,000); +\$.114 per 100 thereafter
Maryville	cubic feet	\$3.12		100	\$3.12 min. includes first 100 c.f.; + \$2.84 per c.f. (next 4900 cf); + \$2.80 per 100 c.f. thereafter
Nixa	gallons	\$6.40	2000		\$6.40 min includes first 2000 gals; + \$2.06 per 1000 (next 3000); + \$1.87 per 1000 (next 10000); \$1.63 per 1000 (next 10000); + \$1.24 per 1000 thereafter
Poplar Bluff	gallons	\$5.28	2000		\$5.28 min. includes first 2000 gals; + \$1.8363 per 1000 gals (next 10,000); + \$1.6894 per 1000 (next 28,000); + \$1.5425 per 1000 gals thereafter
Sedalia	gallons	\$4.98	0		min. charge based on meter size 5/8 -- \$4.98, 3/4 -- \$7.48, 1 -- \$8.46, 1 1/2 -- \$19.01, 2 -- \$29.30, 3 -- \$50.15, 4 -- 74.46, 6 -- \$148.89, 8 -- \$366.31; water usage: \$2.70 per 1000 (first 10000), +\$2.32 per 1000 (next 40,000), + \$2.07 per 1000 (50000)
Springfield	cubic feet	\$9.00			\$9.00 minimum plus \$.87 per CCF (first 5); + \$2.04 per CCF (next 295); + \$.75 per CCF thereafter

**Table VII. User Fee Schedule**

**Municipalities with population over 10,000**

Municipality	Charge Basis	Minimum Charge	Volume for Minimum Fee Gallons	Cubic Feet	Rate Schedule (ccf=100 cubic feet,c.f = cubic feet gals.=Gallons)
St. Charles	gallons	\$2.00			Bimonthly billing.
Webb City	gallons	\$7.60	1870		Monthly billing equals \$2 min plus \$1.98 per 1000 gals \$7.60 min. includes 1870 gals.; + \$.004060 per gal (first 18,700 gals.); + \$.003861 per gal (next 18,700); + \$.003239 per gal (next 37,400); + \$.003038 per gal (next 149,700); + .002616 per gal thereafter
Wentzville	gallons	\$8.47	0		\$8.47 min.; plus \$2.89 per 1000 gals
West Plains	gallons	\$6.10	1000		min. charge based on meter size: 3/4 & 1 -- \$6.10, 1-2 -- \$20, 2-3 -- \$50, 4 & up \$150; + \$1.70 per 1000 (first 30,000); + \$1.62 per 1000 ( next 70,000); + \$1.42 per 1000 (next 200,000); + \$1.08 per 1000 thereafter

**Municipalities with population between 2,500 and 10,000**

Municipality	Charge Basis	Minimum Charge	Volume for Minimum Fee Gallons	Cubic Feet	Rate Schedule (ccf=100 cubic feet,c.f = cubic feet gals.=Gallons)
Ashland	gallons	\$8.50			\$8.50 first 1,000; +\$3.50 per 1,000 after
Bethany	cubic feet	\$5.25		100	First 100 cubic feet \$5.25 each 100 cubic feet thereafter \$3.15
Bolivar	gallons	\$9.00	2000		\$9 for 1st 2,000 gallons plus \$1.52 per 1,000 gallons thereafter
Bonne Terre	gallons	\$5.80	2000		Minimum charge based on tap size: 3/4 to 5/8 -- \$5.80; 1" -- \$14.40; 2" -- \$58.70; 3" \$130.80; 4" -- \$233.80; first 2,000 gallons included in minimum charge; \$2.90 per 1,000 thereafter regardless tap size
Boonville	gallons	\$11.88	1000		\$11.88 -- 1st 1,000 Gal.; Next 9,000 \$4.42 per 1,000 gallons; Next 40,000 - \$3.62 per 1,000 gal; any additional - \$3.31 per 1,000 gal
Branson	gallons	\$4.24	2,000		Res. 1st 2,000 gal \$4.24; \$1.55 per 1,000 gal. thereafter; Com.: Min dependent on tap size (includes 2,000 gallons): 3/4" -- \$4.80; 1" -- \$5.94; 2" -- \$12.14; 3" -- \$20.05; 4" -- \$31.35; 6" -- \$59.60; May - Oct. each 1,000 thereafter \$2.32; Nov. - 1st 2,000 -- \$9.74; next 5,000 \$25.19; next 10,000 \$42.31; next 100000 \$289.08
Brookfield	gallons	\$9.74	2000		\$5 first 1,500 gals.; Next 18,500 gall is \$.18 per 100; next 30,000 gals. \$.16 per 100; over 50,000 gal \$.11 per 100 gals.
Butler	gallons	\$8.50	1000		First 1,000 gal -- \$8.50; + \$4.20 per 1,000 thereafter
California	gallons	\$3.00	1000		\$3 minimum + \$.152 per 100 gals; over 100,000 gals. \$.127 per 100 gals
Camdenton	gallons	\$8.00	2000		\$18 minimum includes first 2,000 gals.;+ \$3 per 1,000 gals. Thereafter
Cameron	cubic feet	\$6.64		200	\$6.64 first 200 c.f.; + \$3.18 per 100 c.f. (next 1400 c.f.); + \$2.18 per 100 c.f. (next 2000 c.f.); + \$1.62 per 100 c.f. thereafter
Canton	gallons	\$12.00	0		\$12 minimum + \$.49 per 100 gallons
Caruthersville	gallons	\$6.75	2000		\$6.75 min for 1st 2,000 gal; \$2.50 per 1,000 thereafter
Cassville	gallons	\$10.27	0		Min \$10.27 + \$.18 per 100 gallons
Centralia	gallons	\$5.06	2000		\$5.06 minimum includes 2,000; \$2.33 per 1,000 thereafter
Charleston	gallons	\$10.00	10000		Min \$6.50 plus \$2.75 per 1000gals (0-10,000); +\$2.25 per 1000 gals (next 40,000); +\$1.65 per 1000 (next 50,000); + \$1.50 per 1000 gals thereafter
Chillicothe	gallons	\$6.50	0		\$7.38 per 1,000 gals.
Crystal City	gallons	\$0.00	0		\$11.34 minimum includes first 2,000 gallons; + \$5.67 per 1,000 (next 3,000); \$5.15 per 1,000 gallons (over 5,000)
Desoto	gallons	\$11.34	2000		

**Table VII. User Fee Schedule**

**Municipalities with population between 2,500 and 10,000**

Municipality	Charge Basis	Minimum Charge	Volume for Minimum Fee Gallons	Cubic Feet	Rate Schedule (ccf=100 cubic feet,c.f = cubic feet gals.=Gallons)
Dexter	gallons	\$7.50	3000		\$7.50 minimum includes first 3,000 gallons; + \$1.75 per 1,000 (3,001-10,000); + \$1.50 per 1,000 (10,001 to 20,000); +\$1.40 per 1,000 (20,001 to 42,000); + \$1.20 per 1,000 (42,001 to 100,000); + \$1.00 per 1,000 gals. Thereafter
El Dorado Springs	gallons	\$5.40	0		Res. 3/4" meter \$5.40 minimum; 1" meter \$6.87 minimum + \$2.47 per 1,000 (first 5,000); +\$1.71 per 1000 thereafter;
Fayette	gallons	\$10.10	1500		\$10.10 include first 1500 gals; +\$8.70 per 1000 gal (next 3500); +\$7.80 per 1000 gals (next 5000 gals); + \$5.95 per 1000 gals (next 15,000 gals); + \$4.30 per 1000 gal (thereafter)
Fredericktown	gallons	\$6.71	1000		\$7.75 minimum includes 1000 gals; + \$.6599 per 100 gal (next 4000); + \$.4732 per 100 gal (next 4000); + \$.4266 per 100 thereafter
Hermann	gallons	\$6.40	1000		\$6.40 minimum includes first 1000 gals; + \$1.80 per 1000 thereafter
Higginsville	cubic feet	\$2.75		0	Minimum \$2.75 plus \$4.13 per 100 cf (first 3000); + \$3.03 per 100 cf (next 67,000 cf); +\$2.98 per 100 thereafter
Kearney	gallons	\$5.00	1000		\$5 minimum includes first 1,000 gals; + \$4.40 next 1,000; + \$3.90 per 1,000 thereafter
Lamar	gallons	\$4.73	1000		\$4.73 min includes first 1000; +\$4.57 next 1000; +\$4.15 per 1000 (next 2000);+ \$3.89 per 1000 (next 3000);+ \$3.52 per 1000 (next 3000); + \$3.26 per 1000 (next 5000); + \$3.15 per 1000 (next 485,000);+ \$2.98 per 1000 thereafter
Licking	gallons	\$6.94	1000		\$6.94 min. include 1,000 gals; + \$3.45 next 1000;+\$3.47 next 1000;+\$1.65 next 1000;+\$1.38 next 1000;+\$1.39 per 1000 (next 44000);+\$1.04 per 1000 (next 100000);over 200,000 \$.70 per 1000
Macon	gallons	\$4.15	1000		\$4.15 minimum include first 1000 gals; + \$2.04 per 1000 (next 9000); + \$1.83 per 1000 (next 990,000); + \$1.50 per 1000 (next 3,000,000);over 4,000,000 \$1.05 per 1000 thereafter
Malden	gallons	\$5.53	2079		Min bill -- \$5.53; \$2.66 per 1000 (first 6,500); + \$2.16 per 1000 (next5000); +\$1.63 per 1000 (next 10000); +\$1.34 per 1000 thereafter
Marceline	gallons	\$14.84	1000		\$14.84 minimum includes first 1,000 gals;+\$6.04 per 1000 thereafter
Moscow Mills	gallons	\$18.30			\$18.30 plus \$.71 per 1000 gals
Mountain View	gallons	\$4.14			Res. \$4.14 min; Com. \$11.99 min; Industrial \$57.90 min; + \$2.29 per 1000 (first 50,000); +\$1.18 per 1000 thereafter
Nevada	gallons	\$10.00	1000		\$10 min includes first 1000 gals; + \$5.65 per 1000 (next 49,000);+ \$3.50 per 1000 thereafter
North Kansas City	gallons	\$15.50	3500		Min charge (includes first 3,500 gals) based on meter size 5/8" -- \$10.46;3/4" -- \$12.91;1"-- \$17.80; 1 1/4"-- \$25.14; 1 1/2" -- \$30.03; + \$1 per 1000 (next 6500);+ \$.95 per 1000 (next 20000);+ \$.85 per 1000 (next 30000); + \$.8 per 1000 (next 133,500); + \$.75 per 1000 gals. thereafter
Osage Beach	gallons	\$18.70	1000		min. charge based on meter size 5/8 -- \$18.7, 1 -- \$26.05, 1 1/2 -- \$33.40; 2 -- \$53.62, 3 -- \$202.50, 4 -- \$257.64; 6 -- \$286.30; + \$.32 per 1000 gals
Owensville	gallons	\$6.00	1000		\$6 min includes first 1000 gals; + \$2 next 1000; + \$1.85 next 1000; + \$1.75 per 1000 (next 27,000);+ \$1.70 per 1000 (next 50,000); +\$.90 per 1000 next 20,000; +\$.85 per 1000 thereafter
Ozark	gallons	\$5.13	1000		\$5.13 minimum includes first 1000 gals; + \$1.58 per 1000 thereafter
Pacific	gallons	\$0.00	2000		\$6.57 minimum includes first 2000 gals;+ \$2.87 per 1000 (next 3000); + \$2.60 per 1000 (next 5000);+ \$2.33 per 1000 thereafter

### Table VII. User Fee Schedule

#### Municipalities with population between 2,500 and 10,000

Municipality	Charge Basis	Minimum Charge	Volume for Minimum Fee Gallons      Cubic Feet	Rate Schedule (ccf=100 cubic feet, c.f = cubic feet gals.=Gallons)
Palmyra	gallons	\$215.00	0	\$2.15 minimum + \$2.70 per 1000
Park Hills	gallons	\$7.50		Min. Charge based on meter size: 5/8 & 3/4 -- \$7.50 (includes 0 water); 1 -- \$15.50 (includes 4,000 gals); 1 1/2 -- \$27.50 (includes 23,000 gals); 3 -- \$107.50 (includes 50,000 gals); 4 -- \$187.50 (includes 90,000 gals); 6 -- \$551.50 (includes 272 gals); minimum \$11.92 include 1000 gals.; +\$6.67 per 1000 (next 49,000); + \$5.92 per 1000 thereafter
Peculiar	gallons	\$11.92	1000	Min. charge based on meter size includes first 1000 gals: 5/8 & 3/4 -- \$6.41, 1 -- \$7.51, 1 1/2 -- \$8.24, 2 -- \$11.55, 3 -- \$19.64, 4 -- \$25.52; + \$2.49 per 1000 gals (next 14,000); + \$2.00 per 1000 (next 185,000); + \$1.51 per 1000 thereafter;
Perryville	gallons	\$6.41	1000	\$7.10 min. includes first 2000 gals; \$2.10 per 100 (next 8,000); + \$2 per 1000 thereafter
Pevely	gallons	\$7.10	2000	\$5.30 minimum includes 1000 gals; + \$4.90 per 1000 gals thereafter
Platte City	gallons	\$5.30	1000	\$15.33 min. includes first 2000 gals; + \$3.11 per 1000 thereafter
Portageville	gallons	\$15.33	2000	\$7.42 min. include first 1000; + \$6.42 per 1000
Richmond	gallons	\$7.42	1000	\$8.50 min. includes first 1000 gals; + \$5.20 per 1000 thereafter
Savannah	gallons	\$8.50	1000	\$6 min. includes first 3,000 gallons; + \$.20 per 100 gals (next 497,000); + \$.10 thereafter
Scott City	gallons	\$6.00	3000	\$6.58 min. includes first 1000 gals; + \$4.94 next 1000; + \$4.11 per 1000 thereafter
Smithville	gallons	\$6.58	1000	\$6.50 min. include 99 gals.; \$3.30 per 1000 gals (next 5000); + \$2.90 per 1000 (next 15000); + \$2.70 per 1000 (next 80000); + \$2 per 1000 thereafter
St. Clair	gallons	\$6.50	99	\$3 min. includes first 3000 gals.; + \$.10 per 100 gals (first 10000); + \$.08 per 100 thereafter
St. James	gallons	\$3.00	3000	\$9.60 includes first 1000 gals; + \$3.50 per 1000 (next 49,000); + \$2.75 per 1000 gals thereafter
St. Genevieve	gallons	\$9.60	1000	\$2.66 min.; + \$.248 per 100 gals
Sullivan	gallons	\$2.66	0	\$10 min. include first 3000 gals; +4.14 per 1000 (next 4000); + \$.96 per 1000 (next 4000); + \$.61 per 1000 thereafter
Tipton	gallons	\$10.00	3000	\$3.48 min. includes first 3000 gals.; +\$1.56 per 1000 (next 50,000); + \$1.23 per 1000 (next 50,000); + \$1.06 per 1000 (next 50000)
Versailles	gallons	\$3.48	3000	Residential: \$4.47 min. includes first 1000 gals; + \$2.87 per 1000 thereafter; Commercial: \$7.65 min. includes first 1000 gals; + \$3.07 per 1000 gals thereafter
Warrenton	gallons	\$4.47	1000	\$7 min includes first 1500 gals; + \$.225 per 100 gals (next 8500); + \$.250 per 100 thereafter
Waynesville	gallons	\$7.00	1500	\$12 min. includes first 1000 gals.: + \$2 per 1000 thereafter
Willard	gallons	\$12.00	1000	\$6 min includes first 1000 gals; + \$2.90 per 1000 thereafter
Wright City	gallons	\$6.00	1000	

#### Municipalities with population under 2,500

Municipality	Charge Basis	Minimum Charge	Volume for Minimum Fee Gallons      Cubic Feet	Rate Schedule (ccf=100 cubic feet, c.f = cubic feet gals.=Gallons)
Adrian	gallons	\$7.50	1000	\$7.50 First 1,000 gallons; + \$7.95 per 1,000 after
Advance	gallons	\$8.00	0	\$8.00 plus 20 cents per gallon used rounded to the nearest 100 gallons
Albany	gallons	\$8.00	2000	0-2,000 \$8.00; Next 8,000 +2.70 per 1,000; Over 10,000 +2.25 per 1000 gallons
Alton	gallons	\$6.50	2000	\$6.50 first 1,000 gallons; +\$1.25 per 1,000 thereafter
Anderson	gallons	\$9.49	2000	First 2,000 \$9.49; + \$1.59 for every 1,000 after

**Table VII. User Fee Schedule**

**Municipalities with population under 2,500**

Municipality	Charge Basis	Minimum Charge	Volume for Minimum Fee Gallons	Cubic Feet	Rate Schedule (ccf=100 cubic feet,c.f = cubic feet gals.=Gallons)
Ash Grove	gallons	\$8.38	2000		0-2000 Gallons \$8.59;2001-4000 +\$2.39;4,000-10,000 +\$2.21;10,001-20,000 +\$2.03;20,001-99,999 +\$1.84
Belle	gallons	\$22.26	2000		\$22.26 for first 2,000 gallons bimonthly bill
Bellflower	gallons	\$13.30	1000		
Bernie	gallons	\$5.38	2000		\$5.38 for first 2,000 gallons
Big Lake	gallons	\$22.00	0		\$22 plus \$3.25 per thousand gallons
Bloomsdale	gallons	\$12.50	2000		\$12.50 first 2,000 gallons; \$2 per thousand thereafter
Branson West	gallons	\$10.00	2000		\$10 1st 2,000; each \$2 per 1,000 thereafter
Brashear	gallons	\$10.00	1000		1st 1,000 \$10; next 1,000 -- \$7.02; next 1,000 -- \$5.81; \$4 per 1,000 thereafter
Braymer	gallons	\$11.50	0		\$7.50 minimum + \$.46.4 per 100 gallons
Bucklin	gallons	\$24.33	2,000		\$24.33 for first 2,000
Bunker	gallons	\$9.00	2000		First 2,000 \$9.00;Next 1,000 + \$1.50;Next 1,000 +\$.75 per 1,000 thereafter
Butterfield	gallons	\$25.00	2000		25 minimum includes first 2,000 gallons + \$.25 per hundred thereafter
Cainsville	gallons	\$13.00			\$4 per 1,000 gals.
Calhoun	gallons	\$10.00	1000		\$10 minimum includes first 1,000 gals; +\$6.25 per 1,000 (1,000 to 15,000); + \$5.75 per 1,000 thereafter
Callao	gallons	\$10.25	1000		Minimum \$10.25 includes first 1,000 gallons; + \$6.25 per 1,000 (1,000 to 10,000); + \$5.25 per 1,000 gals. thereafter
Campbell	gallons	\$12.66	2000		\$12.66 minimum includes first 2,000 gals; +\$1.50 per 1,000 (next 3,000); + \$1.25 per 1,000 (next 5,000); + \$1,000 per 1,000(next 10,000); + \$.75 per 1,000 gals (for any over next 20,000)
Clarksville	gallons	\$15.70	1000		\$15.70 includes first 1,000 gals.; + \$7 per 1,000 (next 2,000); +\$4 per 1,00 (for next 9999)
Clarkton	gallons	\$19.00			\$19.00 flat rate
Clever	gallons	\$8.75	1000		\$8 minimum include first 1,000 gals; \$4 per 1,000 thereafter
Cole Camp	gallons	\$5.00	0		\$.01 per 1,000 Gallons
Collins	gallons	\$9.00	1000		\$9 for 1st 1,000 gals.; + \$.30 per 100 gals (next 4,000); + \$.25 per 100 (4100 to 7000); + \$.20 per 100 (7001 to 10,000)
Concordia	gallons	\$7.00			\$7 minimum + \$4.35 for upto 9,000 gals; + \$5.15 for 9,001 to 90,000; plus \$4.35 over 90,000
Corder	cubic feet	\$8.25		100	\$8.25 minimum includes 100 c.f.;+\$4.50 per 100 c.f. (next 1400 cf); +\$2.91 per 100 c.f. thereafter
Craig	gallons	\$24.95	9000		Single rate \$24.75 minimum includes first 9,000 gallons; \$2.75 per 1,000 gals thereafter; Family rate \$27.50 includes first 10,000 gallons; + \$2.75 per 1,000 gals thereafter
Crane	gallons	\$4.98			
Diamond	gallons	\$6.00	2000		\$6.00 minimum includes first 2,000 gals; + \$1.35 per 1000 thereafter
Diggins	gallons	\$7.30	1500		\$7.30 minimum includes first 1,500 gallons; + \$2.12 per 1,000 gals. Thereafter
Dixon	gallons	\$15.19	100		\$15.19 minimum includes 100 gallons
Downing	gallons	\$12.00	1000		\$12 minimum includes 1,000 gals; +\$.40 per 100 gals. Thereafter
East Lynne	gallons	\$10.50	1500		\$10.50 minimum includes first 1,500 gals;+\$9.10 per 1,000 gals (next 3,500); + \$8.40 per 1,000 (next 5,000);+ \$8.00 per 1,000 (next 5,000); + \$6.00 per 1,000 (next 15,000); +\$5 per 1,000 thereafter
Ellington	gallons	\$4.45	2000		\$4.45 minimum include first 2,000 gallons
Ellsinore	gallons	\$6.00	2000		\$6 minimum include first 2,000 gallons; + \$1.00 per 1,000 (2001-4000);+\$0.75 per 1,000 (4001-5000);+ \$.5 per 1000 thereafter
Emerald Beach		N/A			Yearly Fee of \$130
Everton	gallons	\$7.40			\$7.40 minimum; + \$2.00 per 1000 gals (next 2,000);+\$1.75 per 1000 (next 2,000);+ \$1.25 per 1,000 (next 3,500); +\$1.00 per 1000 thereafter

**Table VII. User Fee Schedule**

**Municipalities with population under 2,500**

Municipality	Charge Basis	Minimum Charge	Volume for Minimum Fee Gallons	Cubic Feet	Rate Schedule (ccf=100 cubic feet,c.f = cubic feet gals.=Gallons)
Fairview	gallons	\$8.00	2000		\$8.00 minimum includes first 2,000 gals; \$3.25 per 1,000 thereafter
Farber	gallons	\$21.97	1000		\$21.97 minimum includes first 1,000 gals; +\$2.87 per 1,000 thereafter
Fordland	gallons	\$15.04	1000		\$15.04 minimum includes first 1,000; + \$1.82 per 1,000 thereafter
Freeburg	gallons	\$7.50	2000		\$7.50 minimum includes first 2,000 gals; + \$.20 per 100 gals (next 3000); + \$.17 per 100 (next 5000); + \$.15 per 100 thereafter
Gallatin	gallons	\$6.16	1000		\$6.16 minimum includes first 1,000 gals.; + \$2.928 per 1000 gals (next 4000); + \$2.157 per 1000 gals (next 20,000); + \$2.176 per 1000 gals thereafter
Gideon		\$0.00	15.55		flat \$15.55 no meters
Glasgow	gallons	\$18.10	1000		\$18.10 minimum includes 1,000 gals; + \$4.08 per 1,000 thereafter
Granby	cubic feet	\$10.00	0	200	\$10.00 Minimum includes first 200 c.f.; +\$.01 per c.f. (next 2,000 c.f.); +.005 per c.f. thereafter
Green City	gallons	\$18.10	0		\$18.10 + \$4.82 per 1000 gals
Hamilton	gallons	\$9.00	1000		\$9 minimum includes 1000 gals; +\$6.30 per 1000 (next 10,000); + \$6.00 per 1,000 (next 10,000); +\$5.50 per 1,000 gals. (next 29,000); + \$5 per 1000 gals thereafter
Hartville	gallons	\$15.00	2000		\$15 minimum includes first 2000 gals.;+\$2.35 per 1000 gals thereafter
Hawk Point	gallons	\$8.74	1000		\$8.50 includes first 1000; + \$7.50 next 1,000; + \$6.50 next 1000;+ \$5.50 every 1000 thereafter
Hermitage	gallons	\$10.00	1000		\$10 minimum includes first 1000 gals.; + \$1.20 per 1,000 gals thereafter
Holcomb	gallons	\$6.00	3000		\$6 min includes first 3,000 gals; +\$1 per 1,000 gals thereafter
Houston	gallons	\$0.00			Min \$8 includes first 1000 gals; + \$.175 per 100 gals (1000 to 25000); + \$.160 per 100 (25000 - 60000);+ \$.130 per 100 gals thereafter
Hume	gallons	\$14.30	1000		\$14.30 min includes 1,000 gals; +\$12.80 per 1000 gals thereafter
Hunnewell	gallons	\$14.35	1000		\$14.35 min includes first 1,000
Iberia	gallons	\$6.15	1000		\$6.15 min includes first 1,000 gals.; + \$1.65 per 1,000 gals thereafter
Jasper	gallons	\$2.50			\$2.50 per 1,000 gals.
Kahoka	gallons	\$10.00	2000		\$10 minimum includes 2,000 gals.; + \$2.90 per 1,000 gals (next 8,000); + \$2.20 per 1,000 gals thereafter
King City	gallons	\$8.50	1000		\$8.50 minimum include first 1,000 gallons; + \$4 per 1,000 gals thereafter
Kingdom City	gallons	\$2.00	0		\$2 min. charge; + \$2.75 per 1,000 gals (next 50,000 gals);+ \$2.25 per 1,000 thereafter
Koshkonong	gallons	\$7.50	1500		\$7.50 minimum includes first 1,500 gallons
La Grange	gallons	\$7.43	2000		Min \$7.43 includes first 2,000 gals; +\$8.80 flat charge and \$1.38 per 1,000 (next 3000); + \$12.79 and \$1.24 per 1000 (next 5000);+ \$18.86 and \$1.10 per 1000 (next 10000);+ \$29.73 and \$.97 per 1000 (next 5000); + \$34.70 and \$1.10 per 1000 (15,000); + \$51
La Plata	gallons	\$9.50	1000		Min \$9.50 includes first 1000 gals; + \$8.50 per 1,000 (next 5,000); + \$7 per 1000 gals (next 4000); + \$6 per 1000 (next 5000); + \$5 per 1000 thereafter
Lake Tapawingo	gallons	\$21.80	1000		\$21.80 minimum includes 1000 gals; + \$4.096 per 1000 (next 8000); + \$2.054 per 1000 thereafter
Lake Waukomis	gallons	\$21.21	2000		\$21.21 includes first 2000 gals
Lake Winnebago	gallons	\$35.40	3000		Min \$35.40 includes 3,000 gals; + \$.01046 per gal (next 3000);+ .00999 per gal thereafter
Lanagan	gallons	\$12.50	1500		\$12.50 min. includes first 1500 gals; +\$3 per 1000 thereafter; Non-metered \$25.00 flat charge
Laredo	gallons	\$15.35	1000		\$15.35 minimum includes 1000 gals
Lathrop	gallons	\$6.51	1000		\$6.50 minimum includes 1000; +\$6.05 per 1000 (next 9000); +\$3.08 per 1000 thereafter
Laurie	gallons	\$6.50	1000		\$6.50 minimum includes first 1,000 gals;

**Table VII. User Fee Schedule**

**Municipalities with population under 2,500**

Municipality	Charge Basis	Minimum Charge	Volume for Minimum Fee Gallons      Cubic Feet	Rate Schedule (ccf=100 cubic feet, c.f = cubic feet gals.=Gallons)
Liberal	gallons	\$5.00	2000	\$5 minimum includes first 2000; + \$1.25 per 1000 thereafter
Lincoln	gallons	\$13.00	1000	\$13 minimum includes first 1,000 gals; +\$3.75 per 1000 thereafter
Linn	gallons	\$10.00	0	
Lockwood	gallons	\$6.50	1000	\$6.50 minimum include first 1000 gals + \$2.25 minimum
Louisburg	gallons	\$15.00	1000	\$15 minimum includes first 1,000 gals: + \$.03 per gal thereafter
Maitland	gallons	\$12.00	1000	\$12 min included first 1000 gals; + \$3.75 per 1,000 thereafter
Mansfield	gallons	\$5.75	1000	Min \$5.75 includes first 1,000 gals; + \$.285 per 100 gals (next 2,000); + \$.26 per 100 gals (next 4000); + \$.235 per 100 gals (next 5000); + \$.21 per 100 gallons thereafter
Marble Hill	gallons	\$9.18	2500	\$9.18 min includes first 2500 gals; + \$.20 per 100 gals thereafter
Marthasville	gallons	\$6.00	1000	\$6 min include first 1000 gals.; +\$2 per 1000 gals (next 4000); +\$1.75 per 1000 gals (next 5000); + \$1.50 per 1000 thereafter
Memphis	gallons	\$19.00	1000	\$9 min. includes first 1000 gals; + \$.459 per 100 thereafter
Merriam Woods	gallons	\$12.00	2000	\$12 first 2000 gals.; \$3 per 1000 gals thereafter
Meta	gallons	\$6.00	2000	\$6 min includes first 2,000 gals.; + \$.003 per gal thereafter
Milan	gallons	\$10.70	1000	\$10.70 min. includes first 1,000 gals; + \$5.35 per 1,000 gals thereafter
Miner	gallons	\$3.50	2000	\$3.50 min includes first 2,000 gals; + \$1 per 1000 gals thereafter
Morley	gallons	\$6.50	100	\$6.50 min includes first 1000 gals;+\$1.92 per 1000 thereafter
Mound City	gallons	\$5.00	0	\$5.50 min; + \$3.70 per 1000 gals (first 8000); +\$3.55 per 1000 gals thereafter
Mountain View	gallons	\$5.00	1000	\$7.65 min includes first 1,000 gals; + \$3.88 per 1000 thereafter
Neelyville	gallons	\$9.60	1000	\$9.60 min. includes first 1000 gals; \$2.60 per 1000 thereafter
New Bloomfield	gallons	\$15.61	2000	\$15.61 min. includes first 2,000 gals; + \$4.44 per 1000 gals thereafter
New Florence	gallons	\$9.72	1000	\$9.72 min. includes first 1000 gals; +\$.46 per 100 gals (next 9000); + \$.24 per 100 gals. Thereafter
New Franklin	gallons	\$12.00	1000	\$12 min includes first 1000 gals; + \$4.85 per 1000 thereafter
New Hampton	gallons	\$12.00	1000	\$12 min includes first 1000 gals;+\$7.70 per 1000 thereafter
New Haven	gallons	\$6.78	1000	\$6.78 min includes first 1000; + \$1.92 per 1000 (next 2000); + \$3.23 per 1000 (next 7000); + \$1.92 per 1000 (Next 40000); + \$1.21 per 1000 (next 50,000); + \$1.00 per 1000 thereafter
Newburg	gallons	\$6.69	1000	min. \$6.69 includes first 1,000: + approx \$1.80 per 1,000 thereafter
Newtown	gallons	\$11.55	1000	
Norborne	gallons	\$11.00		\$11 min; + \$6 per 1000 gals
Northmoor	gallons	\$7.34	1000	\$7.34 minimum includes first 1000 gals; + \$2.27 per 1000 thereafter
Norwood	gallons	\$6.50	2000	\$6.50 min. includes first 2000 gals; + \$.00085 per gal
Oak Grove Vill.	gallons	\$3.00	1500	\$3 min includes first 1500 gals; +\$.20 per 100 gals
Oran	gallons	\$9.20		under 2000 gals -- \$9.20;2-3,000 -- \$10.45;+ \$.50 per 1,000 gals thereafter
Orrick	gallons	\$8.00	1000	\$10 minimum; + \$8.00 first 1000 gals; +\$6.25 per 1000 gals thereafter
Osceola	gallons	\$5.78		
Otterville	gallons	\$8.00	2000	\$8 minimum includes first 2,000 gals; + \$2.10 per 1000 thereafter

**Table VII. User Fee Schedule**

**Municipalities with population under 2,500**

Municipality	Charge Basis	Minimum Charge	Volume for Minimum Fee Gallons      Cubic Feet	Rate Schedule (ccf=100 cubic feet, c.f = cubic feet gals.=Gallons)
Pierce City	gallons	\$9.95	1000	\$9.95 per 1000 minimum; + \$1.50 per 1000 gals thereafter
Plattsburg	gallons	\$5.50	1000	\$5.50 min. includes first 1000 gals; + \$5.15 per 1000 (next 2000); + \$4.50 per 1000 (next 2000); + \$4.35 per 1000 (next 2000); + \$3.75 per 1000 (next 3000); + \$3.40 per 1000 (5000); + \$3.30 per 1000 thereafter
Pleasant Hope	gallons	\$15.80	1000	\$15 min. includes first 1000 gals; +\$4.35 per 1000 (next 10000) + 3 per 1000 thereafter
Polo	gallons	\$15.00	1000	
Princeton	gallons	\$10.00	1000	\$10.80 min. includes first 1,000; + \$7.15 per 1000 thereafter
Raymondville	gallons	\$9.75		\$13.00 min.; + \$.00560 per gal
Rich Hill	gallons	\$13.00	0	
Ridgeway	gallons	\$0.00	100	
Rock Port	gallons	\$6.50	0	
Rogersville	gallons	\$8.00	1000	
Salisbury	gallons	\$5.92	1000	\$6.50 min.; + \$4.15 per 1000 (first 2000); + \$4.65 per 1000 (next 8000); + \$4.15 per 1000 thereafter
Seligman	gallons	\$9.50	2000	\$8 min includes first 1000 gals; +\$4 per 100 thereafter
Sheldon	gallons	\$6.00	2000	\$5.92 min includes first 1000 gals; + .002858 per gal.
Silex	gallons	\$6.00		\$9.50 min. includes first 2000 gals; + \$1.80 per 1000 thereafter
Skidmore	gallons	\$8.00	0	\$6 min. includes first 2000 gals.; +\$.50 per 100 gals. thereafter
Slater	gallons	\$5.78	1000	\$6.00 min.; + \$4.90 for first 1000 gals.; + \$3.60 per 1000 (Next 2000); + \$2.30 per 1000 (next 2000); + \$1.30 thereafter
Smithton	gallons	\$7.89	1000	\$8 min.; +\$5 per 1000 gals
South Greenfield	gallons	\$10.00	2000	\$5.78 min includes first 1000 gals;+ \$5.78 next 1000;+ \$4.52 per 1000 (Next 2000); + \$4.13 per 1000 (next 6000); +\$3.76 per 1000 (next 10000); +\$3.37 per 1000 (next 20000); + \$3 per 1000 (40000); + \$2.28 per 1000 thereafter
Southwest City	gallons	\$9.00		\$7.89 min. includes first 1000 gals.; + \$1.33 per 1000 thereafter
St. Mary	gallons	\$13.75	1000	\$10 min. includes first 2000 gals; +\$.25 per 100 gal. (next 6000 gals) = \$.20 per 100 thereafter
Steelville	gallons	\$6.00		\$13.75 min includes first 1000 gals; +\$4.75 per 1000 thereafter
Stewartsville	gallons	\$15.09	999	\$6 min.; + \$.0014 per gal
Stockton	gallons	\$7.32	0	\$15.09 min includes first 999 gals; + \$7.49 per 1000 (next 5000); + \$6.84 per 1000 ( next 5000);+\$5.95 per 1000 thereafter
Stover	gallons	\$15.00	2000	\$7.32 min.; +\$3.42 per 1000 gals.
Sweet Springs	cubic feet	\$7.30	133	\$15 min includes first 2000 gals; + \$1.10 per 100 (next 30000); + \$.98 per 1000 thereafter
Thayer	gallons	\$3.25	1500	\$7.30 min includes 133 c.f.; +\$.055 per cf thereafter
Truesdale	gallons	\$4.25	1000	\$3.25 min. includes first 1500 gals; + \$.14 per 100 gals (next 4000); + \$.12 per 100 gal (next 5000); + \$.08 per 100 thereafter
Unionville	gallons	\$11.92		\$4.25 min. includes first 1000 gals; + \$2.25 per 1000 gals thereafter
Unity Village	gallons	\$0.00		\$11.92 min.; + \$4.42 per 1000 gals
Urbana	gallons	\$10.00	500	\$10 min. includes first 1500 gals; + \$2.25 per 1000 thereafter
Urich	gallons	\$11.70	1000	\$11.70 min. includes first 1000 gals; + \$10.34 per 1000 thereafter
Vienna	gallons	\$8.50	1000	\$8.50 min. includes 100 gals; + \$2.50 per 1000 thereafter
Wayland	gallons	\$9.50	2000	Residential: \$9.50 min includes first 2000 gals; + \$4 per 1000 (next 2000); + \$3 per 1000 thereafter; Com. \$30 includes first 2000 gals; + \$12 per 1000 (next 2000); + \$9 per 1000 thereafter
Weaubleau	gallons	\$23.07	1000	\$8.47 min. includes first 1000 gals; + \$2.96 next 1000; + \$1.80 per 1000 thereafter

**Table VII. User Fee Schedule**

Municipalities with population under 2,500

Municipality	Charge Basis	Minimum Charge	Volume for Minimum Fee Gallons      Cubic Feet	Rate Schedule (ccf=100 cubic feet, c.f = cubic feet gals.=Gallons)
Weston	gallons	\$15.57	1000	\$15.57 min includes first 1000 gals; + \$.79 per 100 gals (next 2000); + \$.53 per 100 (next 3000); + \$.48 per 100 thereafter
Wheaton	gallons	\$7.00	1500	Residential: \$7.50 min includes first 1500 gals., + \$2.00 per 1000; Commercial: \$15.00 min + \$1.35 per 1000 gals
Willow Springs	gallons	\$12.78	2500	\$12.78 min. includes first 2500 gals; + \$.002904 per gal (next 15,000); + \$.001452 per gal thereafter
Winona	gallons	\$6.65	1000	\$6.65 min. includes first 1000 gals; + \$2.50 per 1000 gals (next 3000); + \$2.00 per 1000 gals (next 8,000); + \$1.95 per 1000 (next 10,000); + \$1.90 per 1000 (next 20,000)
Wood Heights	gallons	\$14.95	1000	\$14.95 min includes first 2000 gals; + \$7.80 per 1000 gals thereafter
Wyaconda	gallons	\$18.50	1000	
Wyatt	gallons	\$17.00	1000	\$17 first 1000 gals; + \$2.80 per 1000 thereafter

**Table VIII. Finances**

(see end of Table VIII for glossary of terms)

**Municipalities with population over 10,000**

Municipality	Have Outstanding Bonds	Type of Bonds	Year of Last Rate Inc.	Had Study Done	Rate Increase Soon	Rate Increase Amount	Utility Is Self Supporting	Transfer Funds to General	Basis for Transfer
Cape Girardeau	Yes	Rev.	2005	No	Yes	2%	Yes	Yes	\$205,000 for administrative costs;
Carthage	Yes	Rev.	2003	Yes	No		Yes	Yes	2.5% PILOT
Eureka	No		2005	Yes	Yes		Yes	Yes	5.23 % of revenue
Excelsior Sp.	Yes	Rev.	2005	Yes	Yes	5%	Yes	Yes	Personnel Pilot
Farmington	No		2004	No	No		No	Yes	
Festus	Yes	Rev.	2005	Yes	Yes	5%	Yes	No	
Gladstone	Yes	Rev.	2006	Yes	Yes	8%	Yes	Yes	Adm. Costs
Harrisonville			2006	Yes	Yes	4%	Yes	Yes	
Kirksville	Yes	Rev.	2006	Yes	Yes	6%	No	Yes	Adm. Costs
Kirkwood	No		2005	No	No		Yes	No	
Lake Ozark	Yes	Rev.	2006	Yes	Yes	2%	Yes	No	
Lebanon	Yes	Other	2000	Yes	No		Yes	Yes	13 percent Adm. Costs
Lee's Summit	Yes	Rev.	2005	Yes	Yes	4%	Yes	Yes	Adm. Costs
Marshall	No		2003	Yes	Yes	100%	Yes	Yes	
Maryville	Yes	Rev.	2005	Yes	Yes		Yes	Yes	5% PILOT
Nixa	Yes	G O	2005	Yes	No		Yes	Yes	5% of gross
Poplar Bluff	No		2004	No	Yes		No	No	
Sedalia	Yes	Rev.	2003	Yes	No		Yes		
Springfield	Yes	Rev.	2005	Yes	No		Yes	Yes	
St. Charles	Yes	Other	2006	Yes	Yes		Yes	No	
Webb City	No		2005	Yes	No		Yes	No	
Wentzville	Yes	G O	2005	Yes	No		Yes	No	
West Plains	Yes	Rev.	2006	Yes	Yes	5%	Yes	Yes	Adm. costs

**Municipalities with population between 2,500 to 10,000**

Municipality	Have Outstanding Bonds	Type of Bonds	Year of Last Rate Inc.	Had Study Done	Rate Increase Soon	Rate Increase Amount	Utility Is Self Supporting	Transfer Funds to General	Basis for Transfer
Ashland	No		2002	Yes	Yes	15%	Yes	No	
Bethany	No		2003	Yes	No		Yes	No	
Bolivar	Yes	G O	2006	Yes	Yes		Yes	No	
Bonne Terre	Yes	Other	2004	No	Yes	5%	Yes	Yes	as needed
Boonville	Yes	Rev.	2006	No	No		Yes	Yes	From Gaming Revenue for Capital Projects
Branson	Yes	Rev.	1986	Yes	Yes	5%	No	No	
Brookfield	Yes		2005	Blank	Yes		Yes	No	
Buffalo	No		2006	Yes	No		Yes	Yes	\$60,000 to cover shared expenses from water & sewer
Butler	Yes	Rev.	2006	Yes	Yes	5%	Yes	Yes	10% PILOT
California	Yes	G O	2001	Yes	No		Yes	No	
Camdenton	Yes	Rev.	2004	Yes	No		No	No	
Cameron	Yes	Rev.	1998	Yes	Yes	7%	Yes	Yes	\$3,000 + 5% PILOT
Canton	Yes	Rev.	2005	Yes	Yes	1%	Yes	No	
Caruthersville	No		2005	No	No		Yes	No	
Cassville	No		0	Yes	No		Yes	No	
Centralia	No		1972	No	No		Yes	Yes	
Charleston	Yes	Rev.	2003	No	No		Yes		
Chillicothe	Yes	Rev.	2004	Yes	No		Yes	No	
Crystal City	No		2006	Yes	No		Yes	No	
Desoto	Yes	Rev.	2006	Yes	Yes	3%	Yes	No	
Dexter	Yes	Rev.	2004	Yes	Yes	100%	Yes	No	
El Dorado Sprs	Yes	Rev.	2006	Yes	No		Yes	No	
Fayette	Yes	Rev.	2005	Yes	Yes		Yes	No	
Fredericktown	Yes	Rev.	2006	Yes	Yes		No	No	

**Table VIII. Finances**

(see end of Table VIII for glossary of terms)

**Municipalities with population between 2,500 to 10,000**

Municipality	Have Outstanding Bonds	Type of Bonds	Year of Last Rate Inc.	Had Rate Study Done	Rates to Increase Soon	Rate Increase Amount	Utility Is Self Supporting	Transfer Funds to General	Basis for Transfer
Hermann	Yes	Other	2003	Yes	Yes		No	Yes	
Higginsville	Yes	Rev.	2006	Yes	No		Yes	No	
Kearney	Yes	Rev.	2006	Yes	Yes	5%	No	No	
Lamar	Yes	Rev.	2005	Yes	No		Yes	No	
Licking	Yes	G O	2004	Yes	No		No	No	
Macon	No		2003	Yes			Yes	No	
Malden	No		2005	No	Yes	3%	No	Yes	
Marceline	Yes	Other	2006	Yes	No		No	No	
Moscow Mills	Yes	Rev.	2005	Yes	No		Yes	No	
Mountain View	Yes	Other	2005	Yes	Yes	6%	Yes	No	
Nevada	No		1983	Yes	No		Yes	Yes	
North K.C.	No		2006	Yes	No		Yes	No	
Osage Beach	Yes	Rev.	2003	Yes	No		No	Yes	Adm. costs
Owensville	Yes	Rev.	2003	Yes	Yes	300%	Yes	No	
Ozark	No		2003	Yes	Yes		Yes	No	
Pacific	Yes	Rev.	0	Yes	No		Yes	No	
Palmyra	No		2006	Yes	No		Yes	Yes	3% PILOT
Park Hills	Yes	Rev.	200	Yes	Yes	5%	Yes	Yes	Adm. Costs
Peculiar	Yes	G O	1996	No	Yes		Yes	No	
Perryville	Yes	Rev.	2002				Yes	No	
Pevely	No		1996	No	No		Yes	No	
Platte City	Yes	Rev.	2005	Yes	Yes	2%	Yes	No	
Portageville	Yes	Rev.	2004	No	No		Yes	No	
Richmond	Yes		2005	Yes	Yes	3%	Yes	No	
Savannah	Yes	Rev.	2002	No	Yes		Yes	Yes	
Scott City	Yes	G O	2000	Yes	No		Yes	Yes	Adm. Costs
Smithville	No		2005	Yes	Yes	100%	Yes	No	
St. Clair	Yes	G O	2006	Yes	Yes		Yes	No	
St. James	No		1996	No	No		No	No	
Ste. Genevieve	Yes	Rev.	2001	Yes	No		Yes	No	
Sullivan	Yes	Rev.	2005	No	Yes	100%	Yes	Yes	5% PILOT
Tipton	Yes	Rev.	2003	Yes	Yes	500%	No	No	
Versailles	No		2005	No			Yes	No	
Warrenton	Yes	Rev.	2005	Yes	Yes	3%	Yes	No	
Waynesville	Yes	Rev.	2006	Yes	No		Yes	Yes	Adm. Costs
Willard	Yes	Rev.	2005	No	No		Yes	No	
Wright City	Yes	G O	2004	Yes	No		Yes	No	

**Municipalities with population under 2,500**

Municipality	Have Outstanding Bonds	Type of Bonds	Year of Last Rate Inc.	Had Rate Study Done	Rates to Increase Soon	Rate Increase Amount	Utility Is Self Supporting	Transfer Funds to General	Basis for Transfer
Adrian	No	Rev.	2004	No	No		Yes	No	
Advance	Yes			Yes	Blank		Yes	Yes	Personnel
Albany	No		2003	Yes	Yes	8%	Yes	Yes	Adm. Costs
Alton	Yes	Rev.	2005	Yes	Yes		Yes	No	
Anderson	No		2003	Yes	Yes	200%	Yes	No	
Ash Grove	Blank		2006	Blank	Yes	25%	Yes	No	
Belle	No		2005	Yes	Yes		Yes	No	
Bellflower	Yes	Other	2004	No	No		Yes	No	
Bernie	Yes	Rev.	2001	No	No		Yes	No	
Big Lake	Yes	G O	2006	No	No		Yes	Yes	Misc. Use
Bloomsdale	No		2004	No	No		Yes	No	
Branson West	Yes	G O	1996	Yes	No		No	No	
Brashear	No		2003	No	Yes		Yes	No	
Braymer	Yes	Rev.	2004	Yes	No		Yes	No	
Bucklin	Yes	G O	2004	Yes	Yes	3%	Yes	No	
Bunker	No		2002	No	No		Yes	Yes	As needed
Butterfield	Yes	G O	2005	Yes			Yes	No	
Cainsville			0						
Calhoun	No		2006	No	No		Yes	No	
Callao	No		2006	No	No		Yes	No	

**Table VIII. Finances**

(see end of Table VIII for glossary of terms)

**Municipalities with population under 2,500**

Municipality	Have Outstanding Bonds	Type of Bonds	Year of Last Rate Inc.	Had Rate Study Done	Rates to Increase Soon	Rate Increase Amount	Utility Is Self Supporting	Transfer Funds to General	Basis for Transfer
Campbell	No		2005	No	No		Yes	Yes	
Clarksville	Yes	G O	1989	Yes	No		Yes	No	
Clarkton	Yes	Rev.	2005	No	No		Yes	Yes	monthly
Clever	Yes	G O	2002	No	No		Yes	No	
Cole Camp	Yes	Rev.	1999	No	Yes		Yes	No	
Collins	No		2005	No	No		Yes	No	
Concordia	Yes	G O	2004	Yes	Yes		Yes	No	5% PILOT
Corder	No		1992	No	Yes		Yes	No	
Craig	No		2005	No	No		No	Yes	
Crane	Yes	Rev.	2005	Yes	Yes		Yes	No	
Diamond	No		2005	No	No		Yes	No	
Diggins	Yes	G O	2005	Yes	Yes		Yes	No	
Dixon	No		2005	Yes	Yes	200%	Yes	No	
Downing	No		1995	Yes	No		Yes	Yes	Adm. Costs
East Lynne	No		2004	Yes	No		Yes	No	
Ellington	No		0	No	No		Yes	No	
Ellsinore	Yes	G O	2002	No	Yes	5%	Yes	No	
Emerald Beach	No		2004	No	Yes	300%	Yes	No	
Everton	No		2002	Yes	No		Yes	No	
Fairview	No		2003	Yes	No		Yes	No	
Farber	No		1992	Yes	No		Yes	Yes	
Fordland	Yes	Other	2	No	Yes		Yes	No	
Freeburg	No	G O		Blank	No		Yes	No	
Gallatin	No		1999	No	No		Yes	Yes	8% Pilot
Gideon	Yes	Rev.	2005	No	No		Yes	No	
Glasgow	Yes	Rev.	2005	Yes	No		Yes	No	
Granby	No		2005	No			Yes	Yes	Adm. Costs
Green City	Yes	Rev.	2006	Yes	No		No	Yes	Adm. Costs
Hamilton	Yes			Yes	Yes		Blank	Blank	
Hartville	Yes	Rev.	2006	Yes	Yes		Yes	No	
Hawk Point	Yes	G O	2004	No			Yes	No	
Hermitage	No		2005	Yes	No		Yes	No	
Holcomb	Yes	G O	2004	No	No		Yes	No	
Houston	Yes	Rev.	0	Yes	Yes	5%	No	No	
Hume	No		2000	Yes	No		Yes	No	
Hunnewell	No		2000	No	Yes		Yes	Yes	
Iberia	No		2005	Yes	No		Yes	No	
Jasper	Yes	Other	0	Yes	Yes		Yes	No	
Kahoka	No		2005	Yes	No		Yes	No	
King City	No		1997	No	No		Yes	No	
Kingdom City	Yes	G O	2005	No	No		No	No	
Koshkonong	No		1998	No	No		Yes	No	
La Grange	No		2004	Yes	No		No	No	
La Plata	No		2005	Yes	No		Yes	Yes	Adm. Costs
Lk. Tapawingo	No		2006	Yes	No		Yes	No	
Lk. Waukomis	No		2001	No	No		Yes	Yes	
Lk. Winnebago	Yes	Rev.	1995	Yes			Yes	Yes	Adm. Costs
Lanagan	No		2006	Yes	Yes		Yes	No	
Laredo	Yes	Rev.	2005	Yes	No		Yes	No	
Lathrop	Yes	Rev.	1994	No	Yes		Yes	No	
Laurie	Yes	G O	2001	Yes	Yes		Yes	No	
Liberal	No		1970	Yes	No		No	No	
Lincoln	No		2004	Yes	No		Yes	No	
Linn	Yes	Rev.	2006	Yes	Yes	43%	Yes	No	
Lockwood	No		2004	No	No		Yes	No	
Louisburg	Yes	G O	0	No	No		Yes	No	
Maitland	No		2002	No	Yes		Yes	No	
Mansfield	No		2005	Yes	Yes		No	No	
Marble Hill	Yes	Rev.	2005	Yes	No		Yes	Yes	
Marthasville	No		1991	Yes	No		Yes	No	
Memphis	No		2005	Yes	Yes		No	No	
Merriam Woods	Yes	Rev.	1995	Yes	Yes		Yes	No	

**Table VIII. Finances**

(see end of Table VIII for glossary of terms)

**Municipalities with population under 2,500**

Municipality	Have Outstanding Bonds	Type of Bonds	Year of Last Rate Inc.	Had Rate Study Done	Rates to Increase Soon	Rate Increase Amount	Utility Is Self Supporting	Transfer Funds to General	Basis for Transfer
Meta	No		1998	No	No		Yes	No	
Milan	Yes	Rev.	2003	Yes	Yes	25%	No	Yes	
Miner	Yes	Rev.	1978	No			Yes	No	
Morley	Yes	G O	1991	No	Yes	100%	Yes	No	
Mound City	Yes	G O	2004	Yes	Yes		Yes	Yes	
Mountain View	Yes	Rev.	2005	No	No		Yes	Yes	Adm. Costs
Neelyville	No		2004	No	No		Yes	No	
New Bloomfield	No		2006	Yes	Yes	3%	Yes	No	
New Florence	No		2005	No	Yes	2%	Yes	No	
New Franklin	Yes		2004	Yes	No		Yes	No	
New Hampton	No		2004	No	Yes		Yes	Yes	\$50 month Adm. Costs
New Haven	Yes	G O	2005	Yes	Yes	1%	Yes	Yes	Adm. Costs
Newburg	Yes	Other	2005	No	No		Yes	No	
Newtown	Yes	G O	2005	No	No		No	No	
Norborne	No		2005	Yes	Yes		Yes	No	
Northmoor	Yes	Rev.	2005	No	Yes	6%	Yes	No	
Norwood	No		0	No	Yes		Yes	No	
Oak Grove Village		No		1998	No	No		Yes	No
Oran	No		2002	No	No		Yes	No	
Orrick	Yes	G O	1999	Yes	Yes		Yes	Yes	personnel
Osceola	No		0	No	No		Yes		
Oterville	No		2005	Yes	Yes		Yes	No	
Pierce City	Yes	Rev.	2003	Yes	Yes		Yes	No	
Plattsburg	No		2004	Yes	Yes	4%	Yes	Yes	5% PILOT
Pleasant Hope	Yes	Rev.	2004		No		Yes	Yes	
Polo	No		2003	No	No		Yes	No	
Princeton	Yes	G O	2003	Yes	No		Yes	No	
Raymondville	No		2006	Yes	No		Yes	No	
Rich Hill	Yes	Rev.	2005	Yes	No		Yes	No	
Ridgeway	Yes		2004	Yes	No		Yes	No	
Rock Port	No		2003	Yes	No		Yes	Yes	
Rogersville	Yes	G O	1999	No	No		Yes	No	
Salisbury	No		2005	No	Yes	12%	Yes	No	
Seligman	Yes	G O	2006	Yes	Yes	5%	Yes	No	
Sheldon	No		2003	Yes	Yes		Yes	No	
Silex	No		2001	No	No		Yes	No	
Skidmore	No		1998	No	No		Yes	No	
Slater	Yes	G O	1992	Yes	Yes	5%	Yes	Yes	10% PILOT
Smithton	No		0		Yes	3%	Yes	No	
Sth. Greenfield	No		2006	No	Yes		Yes	No	
Southwest City	Yes	G O		Yes	No		Yes	No	
St. Mary	Yes	Rev.	2000	Yes	Yes		Yes	No	
Steelville	Yes	Other	2005	Yes	Yes		Yes	Yes	
Stewartsville	Yes		2001	Yes	Yes	5%	Yes	Yes	
Stockton	Yes	Rev.	2005	Yes	Yes	2%	No	No	
Stover	No		2004	Yes	Yes		Yes	Yes	franchise fee & adm. costs
Sweet Springs	Yes	Rev.	2002	Yes	Yes	11%	Yes	No	
Thayer	No		1995	No	No		Yes	No	
Truesdale	Yes	G O	2005	No	Yes		Yes	No	
Unionville	Yes	G O	2006	Yes	Yes		Yes	Yes	6.1% PILOT
Unity Village	No		0	No					
Urbana	No		0	No	No		Yes	No	
Urich	Yes	G O	2005	No	No		No	No	
Vienna	No		2006	No	Yes	100%	Yes	No	
Wayland	No		2005	No	No		Yes	Yes	
Weaubleau	No		2005	Yes	Yes	2%	Yes	Yes	1% for emergencies
Weston	Yes	Rev.	2006	Yes	Yes	100%	No	No	
Wheaton	No		2006		Yes	100%	Yes	No	
Willow Springs	Yes	Rev.	2006	Yes	Yes	5%	No	No	

**Table VIII. Finances**

(see end of Table VIII for glossary of terms)

**Municipalities with population under 2,500**

Municipality	Have Outstanding Bonds	Type of Bonds	Year of Last Rate Inc.	Had Rate Study Done	Rates to Increase Soon	Rate Increase Amount	Utility Is Self Supporting	Transfer Funds to General	Basis for Transfer
Winona	No		2006	No	No		Yes	Yes	
Wood Heights	Yes	G O	0	Yes	No		Yes	No	
Wyaconda	Yes	Rev.	2005	Yes	No		Yes	No	
Wyatt	Yes	Rev.	2005	Yes	No		Yes	No	

G.O. = General Obligation Bond  
 Rev. = Revenue Bond  
 PILOT = Payment in Lieu of Taxes  
 Adm. Costs = Administrative Costs

**Table IX. Extension Policies**  
(see end of Table IX. for glossary of terms)

**Municipalities with population over 10,000**

<u>Municipality</u>	<u>Trunk Lines Paid for by</u>	<u>Muni Builds Laterals to</u>	<u>Muni Maintains Laterals to</u>	<u>Meter Paid For by</u>
Cape Girardeau	Muni & Dev.		Prop Line	Muni
Carthage	Dev.	Prop Line	Meter	Muni
Eureka	Dev.	None	Building	Muni
Excelsior Springs	Dev.	None	None	Customer
Farmington	Dev.	Curb/Stop Box	Curb/Stop Box	Customer
Festus	Dev.	Prop Line	Prop Line	Muni
Gladstone	Dev.		Meter	Muni
Harrisonville	Dev.	None	Curb/Stop Box	Customer
Kirksville		Prop Line	Curb/Stop Box	Customer
Kirkwood	Dev.	None	None	Customer
Lake Ozark	Dev.	Prop Line	Meter	Customer
Lebanon	Muni	Prop Line	Prop Line	
Lee's Summit	Dev.	None	Meter	Muni
Marshall	Muni (50%) Dev. (50%)	Prop Line	Meter	Muni
Maryville	P.O.	Prop Line	Meter	Muni
Nixa	Dev.	Prop Line	Meter	Customer
Poplar Bluff		Prop Line	Prop Line	Customer
Sedalia	Dev.	Prop Line	Meter	Muni
Springfield	Dev.	Prop Line	Prop Line	Customer
St. Charles	Dev.	None	Meter	Customer
Webb City	Dev.	Meter	Meter	Muni
Wentzville	Dev.	Blank	Meter	Customer
West Plains	Dev.	Meter	Meter	

**Municipalities with population between 2,500 and 10,000**

<u>Municipality</u>	<u>Trunk Lines Paid for by</u>	<u>Muni Builds Laterals to</u>	<u>Muni Maintains Laterals to</u>	<u>Meter Paid For by</u>
Ashland	Dev.	Blank	Meter	Customer
Bethany	Dev.	Curb/Stop Box	Curb/Stop Box	Muni
Bolivar	Dev.	None	Prop Line	Customer
Bonne Terre	Dev.	Meter	Meter	Customer
Boonville	Dev.	Curb/Stop Box	Curb/Stop Box	Muni
Branson	Dev.	Meter	Meter	Customer
Brookfield	Dev.	Curb/Stop Box	Curb/Stop Box	Customer
Buffalo	Dev.	Meter	Meter	Customer
Butler	Dev.	Meter	Meter	Customer
California	Muni (85%) Dev (15%)	None	None	Muni
Camdenton	Dev.	Meter	Meter	Customer
Cameron	Dev.	None	None	Muni
Canton	Muni	Meter	Meter	Muni
Caruthersville	Dev.	Prop Line	Meter	Muni
Cassville	Dev.	Prop Line	Meter	Muni
Centralia	Muni	Meter	Meter	Customer
Charleston	Dev.	Prop Line	Curb/Stop Box	Customer
Chillicothe	Dev.	Curb/Stop Box	Curb/Stop Box	Muni
Crystal City	Dev.	Prop Line	Prop Line	Customer
Desoto	Muni	Meter	Meter	Muni
Dexter	Dev.	Prop Line	Meter	Customer
El Dorado Springs	Dev.	Meter	Meter	Muni
Fayette	Dev.	None	Meter	Customer
Fredericktown	P.O. & Dev.	Prop Line	Meter	Customer
Hermann	Dev.	Curb/Stop Box	Curb/Stop Box	Muni
Higginsville	P.O.	Prop Line	Meter	Customer
Kearney	Dev.	None	Meter	Customer
Lamar	Dev.	Meter	Meter	Muni
Licking	Muni	Meter	Meter	Muni
Macon	Dev.	None	None	Muni
Malden	Muni	Prop Line	Prop Line	Muni
Marceline		Prop Line	Prop Line	Muni
Moscow Mills		None	Prop Line	Customer
Mountain View	Dev.	Prop Line	Prop Line	Muni
Nevada	Dev.	Meter	Meter	Customer

**Table IX. Extension Policies**  
(see end of Table IX. for glossary of terms)

**Municipalities with population between 2,500 and 10,000**

<u>Municipality</u>	<u>Trunk Lines Paid for by</u>	<u>Muni Builds Laterals to</u>	<u>Muni Maintains Laterals to</u>	<u>Meter Paid For by</u>
North Kansas City	Dev.	Meter	Meter	Muni
Osage Beach	Dev.	Meter	Meter	Customer
Owensville		Prop Line	Prop Line	Customer
Ozark	Dev.	None	Meter	Customer
Pacific	Dev.	None	Curb/Stop Box	Customer
Pagedale				
Palmyra	Dev.	Meter	Meter	Muni
Park Hills	Dev.	Meter	Meter	Muni
Peculiar	Dev.	Meter	Prop Line	Customer
Perryville	Dev.	None	None	Muni
Pevely	Dev.	Meter	Meter	Muni
Platte City	Dev.	None	Meter	Customer
Portageville	Dev.	Prop Line	Meter	Muni
Richmond	Dev.	None	Meter	Customer
Savannah	Dev.	Meter	Blank	Customer
Scott City	Dev.	Prop Line	Meter	Customer
Smithville	Dev.	Prop Line	Meter	Customer
St. Clair	Dev.	Prop Line	Prop Line	Muni
St. James	Dev.	None	None	Muni
Ste. Genevieve	Dev.	Curb/Stop Box	Meter	Muni
Sullivan	P.O.	Meter	Meter	Customer
Tipton	P.O.	None	Meter	Customer
Versailles	P.O.	Prop Line	Meter	Muni
Warrenton	Dev.	Prop Line	Prop Line	Customer
Waynesville	Dev.	Meter	Meter	Muni
Willard	Dev.	Prop Line	Meter	Customer
Wright City	Dev.	None	None	Customer

**Municipalities with population under 2,500**

<u>Municipality</u>	<u>Trunk Lines Paid for by</u>	<u>Muni Builds Laterals to</u>	<u>Muni Maintains Laterals to</u>	<u>Meter Paid For by</u>
Adrian	P.O. & Dev.	Meter	Meter	
Advance	Dev.	None	Meter	Customer
Albany	Muni	Prop Line	Meter	Muni
Alton	P.O.	Prop Line	Meter	Muni
Anderson		Blank		Customer
Ash Grove	Dev.	Prop Line	Meter	Customer
Belle	P.O.	Curb/Stop Box	Meter	Customer
Bellflower	P.O.	Meter	Meter	Customer
Bernie	Dev.	Prop Line	Prop Line	Muni
Big Lake	Muni (50%) Dev. (50%)	Blank	Meter	Customer
Bloomsdale	P.O.	Blank	Meter	Muni
Branson West	Dev.	Meter	Meter	Muni
Brashear		Meter	Blank	Muni
Braymer	P.O.	Meter	Meter	Muni
Bucklin	Dev.	Prop Line	Meter	Muni
Bunker	Muni (60%) P.O. (40%)	Prop Line	Meter	Muni
Butterfield		Meter	Meter	Muni
Cainsville				
Calhoun	Muni		Meter	Muni
Callao	P.O.	None	Meter	Muni
Campbell	Dev.	None	Meter	Muni
Clarksville	Dev.	Meter	Meter	Muni
Clarkton	P.O.	Meter	Meter	Muni
Clever	Dev.	Meter	Meter	Customer
Cole Camp	Dev.	Meter	Meter	Customer
Collins	P.O.	Prop Line	Meter	Muni
Concordia	Dev.		Meter	Customer
Corder	Dev.	Meter	Meter	Muni
Craig	Dev.	Meter	Meter	Muni
Crane	Dev.	Prop Line	Meter	Customer
Diamond	Dev.	Meter	Meter	Customer

**Table IX. Extension Policies**  
(see end of Table IX. for glossary of terms)

Municipalities with population under 2,500

Municipality	Trunk Lines Paid for by	Muni Builds Laterals to	Muni Maintains Laterals to	Meter Paid For by
Diggins	Dev.	Meter	Meter	Customer
Dixon	Dev.	Prop Line	Meter	Customer
Downing	P.O.	Meter	Meter	Customer
East Lynne	Dev.	Meter	Meter	Customer
Ellington	Muni	Prop Line	Meter	Muni
Ellsinore	P.O.	Meter	Meter	Customer
Emerald Beach	Muni	Prop Line	Prop Line	Blank
Everton	P.O.	Prop Line	Meter	Customer
Fairview	Dev.	Meter		Muni
Farber	Muni	Meter	Meter	Muni
Fordland	Dev.	Prop Line	Meter	Customer
Freeburg	Muni	Prop Line	Blank	Blank
Gallatin	Dev.	Meter	Meter	Muni
Gideon	P.O.	Prop Line	Prop Line	Blank
Glasgow	P.O.	Meter		Muni
Granby	Muni P.O.	Blank	Meter	Muni
Green City	P.O.	Prop Line	Meter	Muni
Hamilton	P.O.	None	None	Muni
Hartville	P.O.	None	Prop Line	Customer
Hawk Point	Dev.	Meter	Meter	Muni
Hermitage		Prop Line	Meter	Muni
Holcomb	Dev.	Prop Line	Prop Line	Muni
Houston	Dev.	Prop Line	Meter	Muni
Hume	Dev.	Meter	Prop Line	Muni
Hunnewell	Dev.	Prop Line	Meter	Muni
Iberia		Prop Line	Prop Line	Muni
Jasper	Muni	Prop Line	Meter	Muni
Kahoka	Muni (50%) Dev. (50%)	Prop Line	Prop Line	Muni
King City	Muni	Prop Line	Meter	Muni
Kingdom City	Muni	Prop Line	Meter	Customer
Koshkonong	P.O.	Meter	Meter	Muni
La Grange	Muni	Meter		Customer
La Plata	Dev.	Meter	Prop Line	Muni
Lake Tapawingo	P.O.	Meter	Meter	Muni
Lake Waukomis	P.O.	Meter	Meter	Muni
Lake Winnebago	Dev.	Street	Curb/Stop Box	Muni
Lanagan	P.O.	Prop Line	Prop Line	Muni
Laredo	Muni & P.O.	Meter	Meter	Muni
Lathrop	Dev.	Meter	Meter	Muni
Laurie	Dev.	Meter	Meter	Customer
Liberal	P.O.	Prop Line	Meter	Customer
Lincoln	Dev.	Prop Line	Meter	Customer
Linn	P.O.	Curb/Stop Box	Curb/Stop Box	Customer
Lockwood	Muni	Street	Blank	
Louisburg	P.O.	Meter	Meter	Customer
Maitland	P.O.	Prop Line	Blank	Muni
Mansfield	Dev.	Meter	Meter	Muni
Marble Hill		Meter	Meter	Customer
Marthasville	Dev.	None	Prop Line	Customer
Memphis	Dev.	Curb/Stop Box	Curb/Stop Box	Muni
Merriam Woods	Dev.	None	Meter	Muni
Meta	Dev.	Meter	Meter	Muni
Milan	Muni	Meter	Meter	Customer
Miner	Dev.	Meter	Meter	Muni
Morley	Muni	Meter	Meter	Muni
Mound City	Dev.	None	None	Muni
Mountain View	Muni	Prop Line	Prop Line	Muni
Neelyville	P.O.	Meter	Meter	Muni
New Bloomfield	Dev.	Prop Line	Meter	Muni
New Florence	Dev.	Prop Line	Meter	Muni
New Franklin	Dev.	Prop Line	Meter	Muni
New Hampton			Meter	Muni
New Haven	Dev.	None	Curb/Stop Box	Customer

**Table IX. Extension Policies**  
(see end of Table IX. for glossary of terms)

Municipalities with population under 2,500

Municipality	Trunk Lines Paid for by	Muni Builds Laterals to	Muni Maintains Laterals to	Meter Paid For by
Newburg	Muni & Dev.		Meter	Muni
Newtown	P.O.	Meter	Meter	Muni
Norborne	P.O.	Prop Line	Prop Line	Customer
Northmoor	P.O.	Meter	Meter	Muni
Norwood	P.O.	Prop Line	Prop Line	Muni
Oak Grove Village	Dev.	Meter	Meter	Muni
Oran		Prop Line	Prop Line	Muni
Orrick	Dev.	Prop Line	Meter	Muni
Osceola	Dev.	Prop Line	Meter	Customer
Otterville	Dev.	Prop Line	Meter	Muni
Pierce City	Dev.	Meter	Meter	Muni
Plattsburg	Dev.	Meter	Meter	Customer
Pleasant Hope	P.O.	Prop Line	Meter	Muni
Polo	P.O.		Meter	Customer
Princeton	P.O.	Prop Line	Prop Line	Muni
Raymondville	P.O.	Meter	Meter	Muni
Rich Hill	P.O.	Prop Line	Meter	Muni
Ridgeway	Muni	Meter	Meter	Customer
Rock Port	Dev.	Prop Line	Meter	Muni
Rogersville	Dev.	None	Meter	Customer
Salisbury	Dev.	Prop Line	Meter	Muni
Seligman	Dev.	Prop Line	Prop Line	Muni
Sheldon	Dev.	Meter	Meter	Muni
Silex			Meter	Muni
Skidmore	Muni	Meter	Meter	Muni
Slater	P.O.	Prop Line	Meter	Muni
Smithton		None	Meter	Muni
South Greenfield		Prop Line	Meter	Muni
Southwest City	P.O.	Blank	Prop Line	Muni
St. Mary	Dev.	Prop Line	Meter	Muni
Steelville	P.O.	None	Meter	Muni
Stewartsville	Dev.	Meter	Meter	Muni
Stockton	Dev.	Blank	Meter	Muni
Stover	Dev.	Meter	Meter	Muni
Sweet Springs	Dev.	Meter	Meter	Muni
Thayer	P.O.	Prop Line	Meter	Customer
Truesdale	P.O.	None	Meter	Muni
Unionville	Dev.	Prop Line	Prop Line	
Unity Village			Prop Line	Muni
Urbana	Dev.	Prop Line	Meter	Muni
Urich		Meter	Meter	Muni
Vienna	P.O.	Meter	Meter	Customer
Wayland	Muni	Prop Line	Prop Line	Customer
Weaubleau	P.O.	Meter	Meter	Muni
Weston	P.O.	Meter	Meter	Customer
Wheaton		None	Meter	Muni
Willow Springs	Muni	None	Prop Line	Muni
Winona	Muni	Prop Line	Prop Line	Muni
Wood Heights	Dev.	Meter	Prop Line	Muni
Wyaconda	Muni (50%) P.O. (50%)	Meter	Meter	Muni
Wyatt		Prop Line	Meter	Muni

Dev. = Developer

P.O. = Property Owner

Prop Line = Property Line

Muni = Municipality

Lateral = Service line generally running from major trunk line to individual residence

Curb Box/Stop Box = maintenance box containing shut off valve

**Table X. Service Outside Corporate Limits**  
(see end of Table X. for glossary of terms)

**Municipalities with population over 10,000**

<u>Municipality</u>	<u>Service Outside Limits</u>	<u>Distribution Mains Paid for by</u>	<u>Muni Maintains Control</u>	<u>Rates Cover Costs</u>	<u>Sell Water To Other Utilities</u>	<u>Rate outside Compared to In city limits</u>
Cape Girardeau	Yes	Muni	Yes		No	Same
Carthage	No					
Eureka	Yes	P.O.;Dev.	Yes	Yes	No	\$9 surcharge
Excelsior Springs	Yes	Dev.	Yes	Yes	Yes	50% higher
Farmington	Yes	P.O.	Yes	Yes	No	50% higher
Festus	Yes	Dev.	Yes	Yes	No	Same
Gladstone	Yes	Dev.	Yes	Yes	No	Same
Harrisonville	Yes	Dev.	No		Yes	
Kirkville	Yes	P.O.	Yes	Yes	Yes	50% higher
Kirkwood	Yes	Dev.	Yes	Yes	No	Same
Lake Ozark	No	P.O.	Yes	Yes	Yes	25 % higher
Lebanon	No					
Lee's Summit	Yes	Dev.	Yes	No	Yes	Same
Marshall	Yes	P.O.	Yes	Yes	Yes	Same
Maryville	Yes	P.O.	Yes	No	Yes	10% higher
Nixa	Yes	Dev.	Yes	Yes	No	50% higher
Poplar Bluff	Yes	P.O.	Yes	No	No	100% higher
Sedalia	Yes	Dev.	Yes	Yes	Yes	Same
Springfield	Yes	Dev.	Yes			Same
St. Charles	Yes		Yes	Yes	No	+\$ .38 per 1000 gals
Webb City	Yes	P.O.	Yes	Yes	No	50% higher
Wentzville	Yes			Yes	No	Same
West Plains	Yes	Dev.	Yes	Yes	No	50% higher

**Municipalities with population between 2,500 and 10,000**

<u>Municipality</u>	<u>Service Outside Limits</u>	<u>Distribution Mains Paid for by</u>	<u>Muni Maintains Control</u>	<u>Rates Cover Costs</u>	<u>Sell Water To Other Utilities</u>	<u>Rate outside Compared to In city limits</u>
Ashland	No					
Bethany	Yes	P.O.	No	Yes	Yes	100% higher
Bolivar	No					
Bonne Terre	Yes	Dev.	No	Yes	No	50% higher
Boonville	Yes	Dev.	Yes	Yes	Yes	100% higher
Branson	Yes	Dev.	Yes	No	No	two and half times
Brookfield	Yes	P.O.	No	Yes	Yes	25 percent higher
Buffalo	Yes	P.O.	Yes	Yes	No	\$10 min plus \$.20 per 100 gal
Butler	Yes	P.O.	Yes	Yes	Yes	Same
California	Yes	P.O.	No	Yes	Yes	100% higher
Camdenton	Yes	Dev.	Yes	Yes	No	Same
Cameron	Yes	Dev.	No	Yes	Yes	100% higher
Canton	Yes	Muni	Yes	Yes		50% higher
Caruthersville	Yes	Muni	Yes	No	Yes	Same
Cassville	Yes	P.O.	Yes	Yes	No	21.4
Centralia	Yes		Yes	No		Same
Charleston	Yes	Dev.	No	Yes	Yes	50% higher
Chillicothe	No					
Crystal City	No					
Desoto	Yes		Yes	Yes	No	100% higher
Dexter	Yes	P.O.	Yes	Yes	No	100% higher
El Dorado Springs	Yes		Yes	Yes	Yes	100% higher
Fayette	Yes	Dev.	No	Blank	Yes	10% greater
Fredericktown	Yes	P.O.;Dev.	Yes	Yes	Yes	Other (specify)
Hermann	No					
Higginsville	Yes	P.O.	Yes	Yes	Yes	50% higher
Kearney	Yes	Dev.	Yes	Yes	No	100% higher
Lamar	No					
Licking	No					
Macon	Yes		Yes	Blank	Yes	+27 percent
Malden	Yes		Yes	Yes	Yes	Same
Marceline	Yes		Yes	Yes	Yes	Other (specify)
Moscow Mills	Yes	Dev.	Yes	Yes	No	100% higher

**Table X. Service Outside Corporate Limits**

(see end of Table X. for glossary of terms)

**Municipalities with population between 2,500 and 10,000**

Municipality	Service Outside Limits	Distribution Mains Paid for by	Muni Maintains Control	Rates Cover Costs	Sell Water To Other Utilities	Rate outside Compared to In city limits
Mountain View	Yes	P.O.	Yes	Yes	No	plus +\$27
Nevada	No				Yes	
North Kansas City	No					
Osage Beach	Yes		Yes	Yes	No	2 1/2 times higher
Owensville	Yes		Yes	Yes	No	100% higher
Ozark	Yes	Dev.	Yes	Yes	Yes	50% higher
Pacific	Yes	Dev.	Yes	Yes	No	
Pagedale						
Palmyra	Yes	Dev.	Yes	Yes	Yes	Same
Park Hills		Dev.	Yes	Yes	No	Same
Peculiar	Yes	Muni	Yes	Yes	No	175 % higher
Perryville	Yes		Yes		Yes	50% higher
Pevely	No					
Platte City	Yes	P.O.	Yes	Yes	Yes	50% higher
Portageville	Yes	Muni	Yes	Yes	No	Same
Richmond	Yes	Dev.	Yes	Yes	No	25% higher
Savannah	Yes	Dev.	Yes	No	Yes	10% higher
Scott City	Yes	P.O.	No	Yes	No	1.75% higher
Smithville	Yes		No	Yes	Yes	Same
St. Clair	No					
St. James	No					
Ste. Genevieve	Yes	Dev.	Blank	Yes	No	100% higher
Sullivan	Yes	P.O.	Yes	No		y
Tipton	Yes	P.O.	No	Yes	No	Same
Versailles	Yes	Dev.	Yes	Yes	No	+\$ .20 per 1000 gals
Warrenton	Yes	Dev.	Yes	Yes	Yes	100% higher
Waynesville	No					
Willard	Yes	P.O.	Yes	No	No	0.2
Wright City	Yes		Yes	Yes	No	100% higher

**Municipalities with population under 2,500**

Municipality	Service Outside Limits	Distribution Mains Paid for by	Muni Maintains Control	Rates Cover Costs	Sell Water To Other Utilities	Rate outside Compared to In city limits
Adrian	Yes	Dev.	No	No	Yes	\$10.20 First 1,000 + \$8,50 per 1,000 thereafter
Advance	Yes	P.O.	Yes	Yes	No	100% higher
Albany	No		Blank		Yes	0
Alton	Yes	P.O.	Yes	Yes	No	100% higher
Anderson	Yes	Dev.	Yes	Yes	No	100% higher
Ash Grove	Yes	Dev.	Yes		No	50% higher
Belle	No					
Bellflower	Yes	Muni	Yes	Yes	No	Same
Bernie	Yes	Muni(50%) P.O. (50%)	Yes	Yes	Yes	50% higher
Big Lake	No					
Bloomsdale	Yes	P.O.	Yes	Yes		Same
Branson West	Yes	Dev.	Yes	Yes	No	100% higher
Brashear	Yes	P.O.	Yes	Yes	No	Same
Braymer	Yes					
Bucklin	Yes	Muni	No	Yes	Yes	50% higher
Bunker	Yes	P.O.	Yes	Yes	No	+25 percent
Butterfield	Yes	P.O.	Yes	Yes	No	100% higher
Cainsville						
Calhoun	Yes	P.O.	Yes	Yes	Yes	Same
Callao	Yes	Dev.	Yes	Yes	No	\$1 more
Campbell	Yes	P.O.	Yes	Yes	No	+\$5 flat fee
Clarksville	Yes		Yes	Yes	No	50% higher
Clarkton	No					
Clever	Yes	P.O.	Yes	Yes	No	Same
Cole Camp	No					
Collins	Yes	P.O.	Yes	No		Same

### Table X. Service Outside Corporate Limits

(see end of Table X. for glossary of terms)

#### Municipalities with population under 2,500

Municipality	Service Outside Limits	Distribution Mains Paid for by	Muni Maintains Control	Rates Cover Costs	Sell Water To Other Utilities	Rate outside Compared to In city limits
Concordia	Yes	P.O.	Yes	Yes	Yes	50% higher
Corder	Yes	P.O.	Yes		Yes	0.15
Craig	Yes	P.O.	Yes	Yes	Yes	Same
Crane	No					
Diamond	Yes	Dev.	Yes	Yes	No	Same
Diggins	Yes	Muni	Yes	Yes	No	0.25
Dixon	Yes	P.O.	Yes	No	Yes	slightly higher
Downing	Yes		Yes	Yes	No	Same
East Lynne	Yes	Dev.	Yes	Yes	No	50% higher
Ellington	Yes	P.O.	No	Yes	No	Same
Ellsinore	Yes	P.O.	Yes	Yes	No	100% higher
Emerald Beach	No					
Everton	Yes	P.O.	Yes	Yes	No	50% higher
Fairview	Yes	Muni	Yes	Yes	No	Same
Farber	Yes	P.O.	Yes	Yes	No	Same
Fordland	Yes	P.O.	Yes	Yes	No	\$19.55 min + \$21.5 per 1,000
Freeburg	Yes	P.O.	Yes	Yes	No	Other (specify)
Gallatin	No					
Gideon	Yes	P.O.	Yes	Yes	No	10% more
Glasgow	Yes	P.O.	Yes	Yes	Yes	100% higher
Granby	No					
Green City	Yes	Muni	Yes	Yes	Yes	Same
Hamilton	Yes	P.O.	Yes	Yes	Yes	about 10% higher
Hartville	Yes	P.O.	Yes	Yes	No	Same
Hawk Point	Yes	Dev.	Yes	No	No	50% higher
Hermitage	No					
Holcomb	Yes	Dev.	Yes	Yes	Yes	Same
Houston	No					
Hume	Yes	P.O.	Yes	Yes	No	Same
Hunnewell	Yes	P.O.	Yes	Yes	No	Same
Iberia	Yes	P.O.	Yes	Yes	No	Same
Jasper	No					
Kahoka	Yes	Muni (50%) Dev. (50%)	Yes	Yes	Yes	50% higher
King City thereafter	Yes	P.O.	Yes	Yes	No	\$10.50 min; +\$5 per 1000
Kingdom City	No					
Koshkonong	Yes	Muni		Yes	No	Same
La Grange	Yes	Muni	Yes	Yes	No	+ 20 percent
La Plata	Yes	P.O.	No	Yes	No	Same
Lake Tapawingo	No					
Lake Waukomis	No					
Lake Winnebago	No					
Lanagan	Yes	Muni	Yes	Yes	No	Other (specify)
Laredo	Yes	P.O.	Yes	Yes	No	Same
Lathrop	Yes	Dev.	Yes	Yes	Yes	10 percent higher
Laurie	Yes	Dev.	Yes	Yes	No	Same
Liberal	Yes	Muni	Yes	No	No	Same
Lincoln	Yes	P.O.	Yes	Yes	No	\$5 extra flat fee
Linn						
Lockwood	Yes	P.O.	Yes	Yes	No	100% higher
Louisburg	No					
Maitland	Yes	P.O.	Yes	Yes	No	+ \$5 flat fee
Mansfield	Yes	P.O.	Yes	Yes	No	Same
Marble Hill	Yes		No	Yes	No	100% higher
Marthasville	Yes	P.O.	Yes	Yes	No	8
Memphis	Yes	P.O.	Yes	Yes	No	50% higher
Merriam Woods	Yes		Yes		No	
Meta	No					
Milan	Yes	Dev.	No	No	Yes	Same
Miner	No					
Morley	Yes	Muni	Yes	No	No	10

**Table X. Service Outside Corporate Limits**  
(see end of Table X. for glossary of terms)

Municipalities with population under 2,500

Municipality	Service Outside Limits	Distribution Mains Paid for by	Muni Maintains Control	Rates Cover Costs	Sell Water To Other Utilities	Rate outside Compared to In city limits
Mound City	Yes	Muni	Yes	Yes	Yes	
Mountain View	Yes	Muni	Yes	No	No	2.65
Neelyville	Yes	Muni	Yes	Yes	No	Same
New Bloomfield	No					
New Florence	No					
New Franklin	Yes	Muni	Yes	Yes	No	\$2 flat fee
New Hampton	No					
New Haven	Yes		Yes	Yes	No	50% higher
Newburg	No					
Newtown	No					
Norborne	Yes	P.O.	Yes	Yes	No	2
Northmoor	No				No	
Norwood	Yes	P.O.	Yes	Yes	No	3 1/2 times higher
Oak Grove Village	No					
Oran	Yes	P.O.	Yes	Yes	No	18.7
Orrick	No					
Osceola	No					
Oterville	Yes	Muni	Yes		No	Other (specify)
Pierce City	No		Yes	Yes	No	50% higher
Plattsburg	Yes	Dev.	Yes	Yes	Yes	
Pleasant Hope	No			Yes	No	Same
Polo	No					
Princeton	Yes	P.O.	No	Yes	Yes	Same
Raymondville	No					
Rich Hill	Yes	P.O.;Dev.	Yes	Yes	Yes	15 % higher
Ridgeway	No	P.O.	No	No	No	
Rock Port	No					
Rogersville	No					
Salisbury	Yes	Dev.	No	Yes	No	15% higher
Seligman	Yes	P.O.	Yes	Yes	No	+\$2 flat and \$.20 per 1000 gal
Sheldon	Yes	P.O.	Yes	Yes	Yes	Same
Silex	No					
Skidmore	Yes	P.O.	Yes	Yes	No	50% higher
Slater	Yes		No	Yes	Yes	10% higher
Smithton	Yes	P.O.	Yes	Yes	No	100% higher
South Greenfield	Yes		Yes	Yes	No	Same
Southwest City	Yes	P.O.	Yes	No	No	Same
St. Mary	Yes	P.O.	No	Yes	No	Same
Steelville	No					
Stewartville	Yes	Muni	Yes		No	Same
Stockton	Yes	Dev.	Yes	Yes	No	+\$7 flat fee
Stover	Yes	P.O.	Yes	Yes	No	50% higher
Sweet Springs	No	Dev.	No	Yes	No	+\$1.50 flat fee
Thayer	Yes	P.O.	Yes	Yes	No	100% higher
Truesdale	No					
Unionville	Yes	P.O.	No	Yes	Yes	5% higher
Unity Village	No					
Urbana	Yes	P.O.	Yes	No	No	+\$2 flat fee
Urich	Yes	P.O.	Yes	Yes	No	Same
Vienna	Yes	P.O.	Yes	Yes	No	50% higher
Wayland	Yes	P.O.	Yes	Yes	No	Same
Weableau	Yes	P.O.	No	Yes	No	0.0775
Weston	No				Yes	
Wheaton	Yes	P.O.	Yes	Yes	No	50% higher
Willow Springs	Yes	Muni	Yes	Yes	No	100% higher
Winona	No					
Wood Heights	No					
Wyaconda	Yes	P.O.	Yes	Yes	No	Same
Wyatt	Yes	P.O.	Yes	Yes	No	Same

Dev. = Developer; P.O. = Property Owner; Muni = Municipality

**Table XI. Water Testing and Water Conservation**

**Municipalities with population over 10,000**

Municipality	Municipality Does Testing	Pays Private Lab to test	Lab Costs	Has Water Conservation plan
Cape Girardeau	No	Yes	\$6,800	Yes
Carthage	Yes	No		
Eureka	Yes	Yes	\$1,080	No
Excelsior Springs	Yes	No		No
Farmington	No	No		No
Festus	Yes	Yes	\$2,500	No
Gladstone	Yes			Yes
Harrisonville	Yes	No		No
Kirksville	No	Yes	\$10,000	No
Kirkwood	Yes	No		No
Lake Ozark	No	No		No
Lebanon	Yes			No
Lee's Summit	Yes	Yes	\$2,750	No
Marshall	Yes	No		Yes
Maryville	Yes	Yes	\$2,600	No
Nixa	Yes	No		No
Poplar Bluff	No	No		No
Sedalia	Yes	No		No
Springfield	Yes	No		Yes
St. Charles	Yes	No		No
Webb City	No	Yes	\$2,640	No
Wentzville	No	Yes	\$600	Yes
West Plains	Yes	No		Yes

**Municipalities with population between 2,500 and 10,000**

Municipality	Municipality Does Testing	Pays Private Lab to test	Lab Costs	Has Water Conservation plan
Ashland	Yes	No		No
Bethany	No	No		No
Bolivar	No			No
Bonne Terre	No			No
Boonville	Yes	No		No
Branson	Yes	No		Yes
Brookfield	Yes	Yes		No
Buffalo	No	No		No
Butler	Yes	No		No
California	No	No		No
Camdenton	No	Yes	\$600	No
Cameron	Yes	Yes		Yes
Canton	Yes	No		Yes
Caruthersville	Yes			
Cassville	No	No		No
Centralia	Yes	No		No
Charleston	No	No		No
Chillicothe	Yes	No		No
Crystal City	Yes	No		Yes
Desoto	No	Yes	\$1,500	No
Dexter	Yes			No
El Dorado Springs	No	Yes		No
Fayette	Yes	No		No
Fredericktown	Yes	No	\$246	Blank
Hermann	Yes	No		No
Higginsville	Yes	No		No
Kearney	Yes			Yes
Lamar	Yes			No
Licking	No	No		No
Macon	Yes	No		No
Malden	No			No
Marceline	Yes	No		Yes
Moscow Mills	Yes	No		No
Mountain View	No	Yes	\$960	No
Nevada	Yes	No		No
North Kansas City	Yes	No		No
Osage Beach	No	Yes	\$140	No

**Table XI. Water Testing and Conservation**

**Municipalities with population between 2,500 and 10,000**

<u>Municipality</u>	<u>Municipality Does Testing</u>	<u>Pays Private Lab to test</u>	<u>Lab Costs</u>	<u>Has Water Conservation plan</u>
Owensville	No	Yes	\$2,600	No
Ozark	Yes	No	\$3,000	No
Pacific	No	Yes		No
Pagedale				
Palmyra	Yes			Yes
Park Hills	Yes	Yes	\$1,152	No
Peculiar	No	No		No
Perryville	No	Yes	\$1,250	No
Pevely	No	Yes		No
Platte City	Yes	Yes		Yes
Portageville	Yes	No		No
Richmond	No	No		No
Savannah	Yes			No
Scott City	Yes	Yes	\$100	Yes
Smithville	Yes			No
St. Clair	No	No		No
St. James	No	No		No
Ste. Genevieve	Yes	Yes	\$1,025	No
Sullivan	No	Yes	\$3,000	No
Tipton	Yes	No		No
Versailles	No	Yes		No
Warrenton	No	No		No
Waynesville	No	No		No
Willard	Yes	No		No
Wright City	No	No		No

**Municipalities with population under 2,500**

<u>Municipality</u>	<u>Municipality Does Testing</u>	<u>Pays Private Lab to test</u>	<u>Lab Costs</u>	<u>Has Water Conservation plan</u>
Adrian	No			
Advance	Yes	No		No
Albany	No	Yes	\$1,260	No
Alton	No	No		No
Anderson	No	Yes	\$5,616	No
Ash Grove	No	No		No
Belle	No	Yes		No
Bellflower	Yes	No		No
Bernie	Yes	No		Yes
Big Lake	No	No		No
Bloomsdale	Yes	No		No
Branson West	No	Yes	\$180	No
Brashear				No
Braymer	No	No		No
Bucklin	Yes	No		Yes
Bunker	No	No		No
Butterfield	No	No		No
Cainsville	No	Yes	\$50	No
Calhoun	Yes	No		No
Callao	Yes	No		No
Campbell	No	No		No
Clarksville	No	Yes	\$350	No
Clarkton	Yes	Yes	\$1,287	No
Clever	Yes	Yes		No
Cole Camp	No	Yes		
Collins	No	No		No
Concordia	Yes			No
Corder	No	No		No
Craig	Yes	No		No
Crane	No	No		No
Diamond	No	Yes	\$800	No
Diggins	Yes	Yes		No
Dixon	No	No		
Downing	Yes	No		Yes
East Lynne	No	No		No

**Table XI. Water Testing and Conservation**

Municipalities with population under 2,500

Municipality	Municipality Does Testing	Pays Private Lab to test	Lab Costs	Has Water Conservation plan
Ellington	No	No		No
Ellsinore	No	No		No
Emerald Beach	No	No		No
Everton				No
Fairview	No	No		No
Farber	Yes	Yes	\$240	No
Fordland	No	No		No
Freeburg	No	No		No
Gallatin	Yes	No		No
Gideon	Yes	No		No
Glasgow	Yes	No		Yes
Granby	No			No
Green City				Yes
Hamilton	No	No		Yes
Hartville	No	Yes		No
Hawk Point	No	No		No
Hermitage	No	No		No
Holcomb	No	No		No
Houston	No	Yes		No
Hume	No			No
Hunnewell	No	No		No
Iberia	Yes		\$1,500	No
Jasper	No	Yes	\$1,200	No
Kahoka	Yes	No		No
King City	Yes	No		Yes
Kingdom City	Yes	No		No
Koshkonong	No	No		
La Grange				No
La Plata	Yes	Yes		No
Lake Tapawingo	Yes			
Lake Waukomis	Yes	No		No
Lake Winnebago	Yes	Yes	\$300	
Lanagan	Yes	No		No
Laredo	No	No		No
Lathrop	No	No		No
Laurie	No	Yes	\$1,200	No
Liberal	Yes	No		No
Lincoln	Yes	No		Yes
Linn	No	Yes		No
Lockwood	No	Yes		No
Louisburg	No	No		No
Maitland	Yes	No		Yes
Mansfield	Yes	No		No
Marble Hill	No	No		No
Marthasville	No	No		No
Memphis	Yes			Yes
Merriam Woods	No	No		No
Meta	No	No		No
Milan	Yes	No		Yes
Miner	Yes	No		No
Morley	No	No		No
Mound City	Yes			No
Mountain View	No	No		No
Neelyville	Yes	No		No
New Bloomfield	No	No		No
New Florence	No			No
New Franklin	No	No		Yes
New Hampton	No	No		No
New Haven	Yes	Yes		Yes
Newburg	No			No
Newtown	No	Yes	\$120	No
Norborne	Yes	No		No
Northmoor	Yes	No		No
Norwood	Yes	No		No
Oak Grove Village	No	No		No

**Table XI. Water Testing and Conservation**

Municipalities with population under 2,500

Municipality	Municipality Does Testing	Pays Private Lab to test	Lab Costs	Has Water Conservation plan
Oran	No	No		No
Orrick	No	Yes		No
Osceola	No	No		No
Oterville	No	Yes	\$2,088	No
Pierce City	No			No
Plattsburg	Yes	No		No
Pleasant Hope	Yes	No		No
Polo	Yes	No		No
Princeton	Yes	No		Yes
Raymondville	Yes	No		No
Rich Hill	No	No		Yes
Ridgeway	No	No		No
Rock Port	Yes	No		No
Rogersville	No	Yes		No
Salisbury	Yes	No		No
Seligman	No	Yes	\$840	No
Sheldon	Yes			No
Silex	No	No		No
Skidmore	Yes	No		No
Slater	Yes			Yes
Smithton	No	No		No
South Greenfield	No	No		No
Southwest City	Yes	Yes	\$1,380	
St. Mary	No	No		No
Steelville	No	No		
Stewartsville	No	Yes		Yes
Stockton	Yes	No		No
Stover	No	Yes		No
Sweet Springs	No	Yes		No
Thayer	No	No		No
Truesdale	No			No
Unionville	Yes	No		Yes
Unity Village	Yes	Yes	\$1,000	No
Urbana	Yes			No
Urich	Yes	No		No
Vienna	No	Yes	\$500	No
Wayland	Yes	Yes		No
Weaubleau	Yes			No
Weston	Yes	No		Yes
Wheaton	No	No		No
Willow Springs	Yes			No
Winona	Yes	No		No
Wood Heights	No	Yes		No
Wyaconda	No	No		No
Wyatt	No	No		No